

WATERCARE SERVICES LIMITED

AGENDA | Board meeting | 19/11/2015

Venue	Watercare Services Limited, Mangere Wastewater Treatment Plant
Time	10:30am

Open Public Meeting

Item	Spokesperson	Action sought at governance meeting	Supporting Material
1. Apologies	Chair	<ul style="list-style-type: none"> Record Apologies 	
2. Minutes of Meeting	Chair	<ul style="list-style-type: none"> Approve Board Meeting Minutes <ul style="list-style-type: none"> 29 October 2015 	Minutes 29 October 2015
3. Directors' Corporate Governance Items	Chair	<ul style="list-style-type: none"> Corporate Planner 2015 / 2016 Review Disclosure of Interests (Directors & Executive Management) Organisation Chart 	Corporate Planners Disclosure of Interests Organisation Chart
4. Chief Executive's Report and Scorecard	R Jaduram	<ul style="list-style-type: none"> Note the Chief Executive's report 	Chief Executive's Report
5. Wastewater Effluent Reuse	S Cunis	<ul style="list-style-type: none"> Receive presentation 	Presentation (no pack content)
6. Update on Proposed Auckland Unitary Plan	I Gotelli	<ul style="list-style-type: none"> Receive presentation 	Presentation (no pack content)
7. General Business	Chair		

Date of next Meeting – 16 December 2015
 Location – Watercare, 73 Remuera Road, Newmarket

MINUTES

SUBJECT	WATERCARE SERVICES BOARD MEETING
VENUE	Watercare Services Limited, 73 Remuera Road, Remuera, Auckland
DATE	29 October 2015
TIME	10:30am
STATUS	Open Session

	Present:	In Attendance:	Public in Attendance:
	M Allen D Clarke (Chairman) N Crauford P Drummond C Harland J Hoare T Lanigan M Kingi (Board Observer)	R Jaduram M Bridge R Chenery S Cunis B Monk S Webster	One
1.	Apologies <ul style="list-style-type: none"> D Thomas 		
2.	Minutes of Previous Meeting <ul style="list-style-type: none"> The Board resolved that the Minutes of the public section of the Board meeting held on 25 September 2015 be confirmed as correct. 		
3.	Directors Corporate Governance Items <ul style="list-style-type: none"> Corporate Planner 2015 The corporate planner was noted. Review Disclosure of Interests The Board noted the paper. 		
4.	Chief Executive's Report and Scorecard <ul style="list-style-type: none"> Health and Safety There were no lost time injuries during September. The lost time injury frequency rate and total recordable injury frequency rate continue to trend in a positive direction. Management continues to reinforce a positive safety culture. Service Delivery Lake storage levels, at 85%, are below average for September. A high level of take from the Waikato River continues so as to maximise storage lake levels before the summer period. All Watercare water treatment plants, including rural plants, have recently achieved an 'A' grading. The 'A' grading follows significant investment in upgrades and remedial work at the rural water treatment plant since integration. The target for all water treatment plants to be graded 'A' has been achieved five years ahead of schedule. Finance Financial performance continues broadly in line with year end results. Revenue is ahead of budget, expenses are below budget and debt levels are \$20m lower than projected for the end of September. Infrastructure Growth Charge revenue is \$2m ahead of budget at the end of September. Capital Programme The capital programme is forecast to be at 91% of budget at year end. 		

	<p>Management will prepare an infrastructure projects waterfall chart for the six months to 31 December 2015.</p> <ul style="list-style-type: none"> • Statutory Planning Management will provide a briefing on the status of the Proposed Auckland Unitary Plan. • Maori Engagement There is continued interest from Auckland Council in extending the Mana Whenua Kaitiaki Forum to incorporate engagement with Auckland Council and other CCO's. Operational protocols for works on the Maunga are being agreed with the Maunga Authority and are expected to be endorsed by all parties in December. The Mark Ford scholarships have been awarded to two candidates. A presentation ceremony is being planned with Mrs Ford and the recipients to be in attendance.
5.	<p>Annual Performance Against Statement of Intent</p> <ul style="list-style-type: none"> • Performance against the 2014/15 Statement of Intent was reported to the shareholder on a quarterly basis and is recorded in the Statement of Service Performance within Watercare's 2015 Annual Report. • 24 of the 26 Statement of Intent performance measures for 2014/15 were met. • The Board received the report.
6.	<p>Treatment of Algal Toxins</p> <ul style="list-style-type: none"> • The Board received a presentation on emerging raw water quality issues.
7.	<p>General Business</p> <ul style="list-style-type: none"> • The meeting closed at 11:55am.

CERTIFIED AS A TRUE AND CORRECT RECORD

Chairman

WATERCARE BOARD PLANNER 2015

	2015											
	January	February	March	April	May	June	July	August	September	October	November	December
Board Meeting		4 Feb Newmarket 26 Feb - Workshop Newmarket	19 March Mangere	30 April Newmarket	29 May Newmarket*	26 June Newmarket	31 July Newmarket	20 Aug Ardmore	25 Sept Newmarket	29 Oct Newmarket*	19 Nov Mangere	16 Dec Newmarket
Health & Safety Committee Meeting			19 March Mangere	30 April Newmarket	29 May Newmarket	26 June Newmarket						16 Dec Newmarket
Health & Safety Committee Workshops		26 Feb Newmarket		2 April Newmarket	6 May Newmarket	4 June Newmarket	2 July Newmarket	6 Aug Newmarket	3 Sept Newmarket	1 Oct Newmarket	5 Nov Newmarket	3 Dec Newmarket
Audit + Risk Committee Meeting		^4 Feb Newmarket			6 May Newmarket		^31 July Newmarket	17 Aug Newmarket			10 Nov Newmarket	
Capital Projects Working Group		4 Feb Newmarket		30 April			15 July Newmarket			21 October Newmarket		
Remuneration Committee		26 Feb Newmarket						31 August Newmarket			19 Nov Newmarket	
Statement of Intent		Approval of Draft 2015-2018 SOI	1 March Draft SOI to shareholder		Present shareholder SOI feedback at public meeting	Final 2015- 2018 SOI issued to shareholder			Work on 2016- 2019 Sol Key dates yet to be advised by Auckland Council			
Shareholder Interaction**			3 March CCO Governance & Monitoring Committee		12 May CCO Governance & Monitoring Committee (Q3)			4 August CCO Governance & Monitoring Committee (Tentative)(Q4)				
Key Finance Decisions					29 May Approval of 2015/16 Budget							
Other		Qtr Statutory Compliance Reporting		Qtr Statutory Compliance Reporting			Qtr Statutory Compliance Reporting			Qtr Statutory Compliance Reporting		

* Statutory public Board meeting - deputations invited

^ Extraordinary Audit & Risk and Board Meeting to meet shareholder half year and annual report timeline

** 2015 timetable yet to be confirmed by Auckland Council

WATERCARE BOARD PLANNER 2016

	2016											
	January	February	March	April	May	June	July	August	September	October	November	December
Board Meeting		3 Feb Newmarket	3 March - Workshop Newmarket 1 April Newmarket	20 April Newmarket	24 May Newmarket*	27 June Newmarket	1 August Newmarket	31 Aug Newmarket	29 Sept Newmarket	18 Oct Newmarket*	14 Nov Newmarket	13 Dec Newmarket
Health and Safety Committee Workshops												
Health and Safety Site Visits												
Audit and Risk Committee Meeting		3 Feb Newmarket (before Board meeting)			5 May Newmarket		11 August Newmarket (before Board meeting)	22 Aug Newmarket			8 Nov Newmarket	
Capital Projects Working Group		3 Feb Newmarket (after Board meeting)			24 May Newmarket (after Board meeting)			31 Aug Newmarket (after Board meeting)			14 Nov Newmarket (after Board meeting)	
Remuneration and Appointments Committee		3 Feb Newmarket (before Board meeting)		20 April Newmarket (before Board meeting)		27 June Newmarket (before Board meeting)		31 August Newmarket (before Board meeting)		18 October Newmarket (before Board meeting)		
Statement of Intent		Approval of Draft 2016-2019 SOI	1 March Draft SOI to shareholder		Present shareholder SOI feedback at public meeting	Final 2016-2019 SOI issued to shareholder				Work on 2017-2020 SOI Key dates yet to be advised by Auckland Council		
Shareholder Interaction			1 March - Quarterly Briefing to CCO Governance & Monitoring Committee		TBC by Council - potentially workshop to replace quarterly briefing				6 Sept - Quarterly Briefing to CCO Governance & Monitoring Committee			
Key Finance Decisions						27 June Approval of 2016/17 Budget						
Other		Qtr Statutory Compliance Reporting		Qtr Statutory Compliance Reporting			Qtr Statutory Compliance Reporting			Qtr Statutory Compliance Reporting		

* Statutory public Board meeting - deputations invited

^ Extraordinary Audit & Risk and Board Meeting to meet shareholder half year and annual report timeline

Report to the Board of Watercare Services Limited

Subject: Disclosure of Interests

Date: 13 November 2015

Section 140 of the Companies Act 1993 requires disclosure of interests of a director to the Board. Set out below are the disclosures of interests received as at the date of this report.

<i>Director</i>	<i>Interest</i>
David Clarke	<ul style="list-style-type: none"> – Chairman, TRG Group Ltd – Radiology Services – Chairman, Skin Institute Limited – Director, Hawkins Watts Ltd – Director, Hynds Ltd – Chairman, Health Alliance NZ Limited – Chairman, Jucy Group Limited
Peter Drummond	<ul style="list-style-type: none"> – Chairman, Appliance Connexion Ltd – Chairman, Watercare Harbour Clean Up Trust – Chairman, Variety Medical Missions South Pacific – Director, NARTA New Zealand Ltd – Director, NARTA International PTY Ltd – Panel member , Fire Review, Dept Internal Affairs – Director – Port Marlborough New Zealand Limited – Director – Ngati Awa Group Holdings Limited
Catherine Harland	<ul style="list-style-type: none"> – Director, McHar Investments Ltd – Director, Interface Partners Ltd – Trustee, One Tree Hill Jubilee Educational Trust – Member, Auckland Regional Amenities Funding Board
Tony Lanigan	<ul style="list-style-type: none"> – Director and Shareholder, A G Lanigan & Associates (2007) Limited – Shareholder, Fletcher Building – Director, Habitat for Humanity New Zealand Limited – Director and Shareholder, Lanigan Trustee Limited – Director and Shareholder, Lanison and Associates Limited – Director and Chair, Housing Foundation Limited – Director, Tamaki Makaurau Community Housing Limited – Director, NZ Transport Agency (NZTA) – Member, Ministry of Health Hospital Redevelopment Partnership Group for Canterbury
Mike Allen	<ul style="list-style-type: none"> – Director, Coats Group PLC – Director, Godfrey Hirst Australia and related companies – Shareholder, Innoflow – Director, Tainui Group Holdings Limited – Director, Breakwater Consulting Limited – Director, China Construction Bank (New Zealand) Limited
Julia Hoare	<ul style="list-style-type: none"> – Director, AWF Madison Group Limited – Director, New Zealand Post Limited – Deputy Chairman, The A2 Milk Company Limited – Member, Auckland Committee, Institute of Directors – Member, External Reporting Advisory Board – Member, Institute of Directors National Council

	<ul style="list-style-type: none"> – Director, Port of Tauranga Limited
Nicola Crauford	<ul style="list-style-type: none"> – Chairman, Wellington Rural Fire Authority – Director, Environmental Protection Authority – Member of Electoral Authority - Cooperative Bank Limited – Senior Consultant - WorleyParsons New Zealand Ltd – Director and Shareholder - Riposte Consulting Limited – Director and Shareholder - Crauford Robertson Consulting – Director and Shareholder - Martin Crauford Limited – Director, Wellington Water Limited – Director, Orion New Zealand Limited – Member, Local Government Risk Management Agency Establishment Board – Chairman, GNS Science International Limited
David Thomas	<ul style="list-style-type: none"> – Chairman, Ngati Whakaue Tribal Lands Inc – Council Member, Business New Zealand – Board Member, EMA (Northern) – Chairman, Gypsum Board Manufacturers of Australasia – Shareholder / Employee, Fletcher Building Limited – Director, New Zealand Ceiling & Drywall Supplies Limited

RECOMMENDATION

That the report be noted.

Report prepared by:

Approved by:

R Fisher
General Counsel

R Jaduram
Chief Executive

Report to the Board of Watercare Services Limited

Subject: Disclosure of Interests – Executive Management

Date: 13 November 2015

<i>Executive</i>	<i>Interest</i>
Raveen Jaduram	Director – Wellington Water Limited Trustee - Te Motu a Hiaroa (Puketutu Island) Governance Trust Steering Committee Member – Business Leaders’ Health and Safety Forum
Rob Fisher	Deputy Chairman - Middlemore Foundation President - Auckland University Rugby Football Club Trustee - Watercare Harbour Clean Up Trust Trustee - Te Motu a Hiaroa (Puketutu Island) Governance Trust
Brian Monk	Deputy Chairman - MIT Chairman Audit and Compliance Committee - MIT Trustee - Watercare Harbour Clean Up Trust Trustee - Te Motu a Hiaroa (Puketutu Island) Governance Trust
Steve Webster	Director – Howick Swimgym Limited
Shayne Cunis	Chairman – Kelston Boys High School Board of Trustees
Peter Gaskin	Director - CPG Limited Director - Zebra Promotional Limited
Marlon Bridge	Trustee - Te Motu a Hiaroa (Puketutu Island) Governance Trust

RECOMMENDATION

That the report be noted.

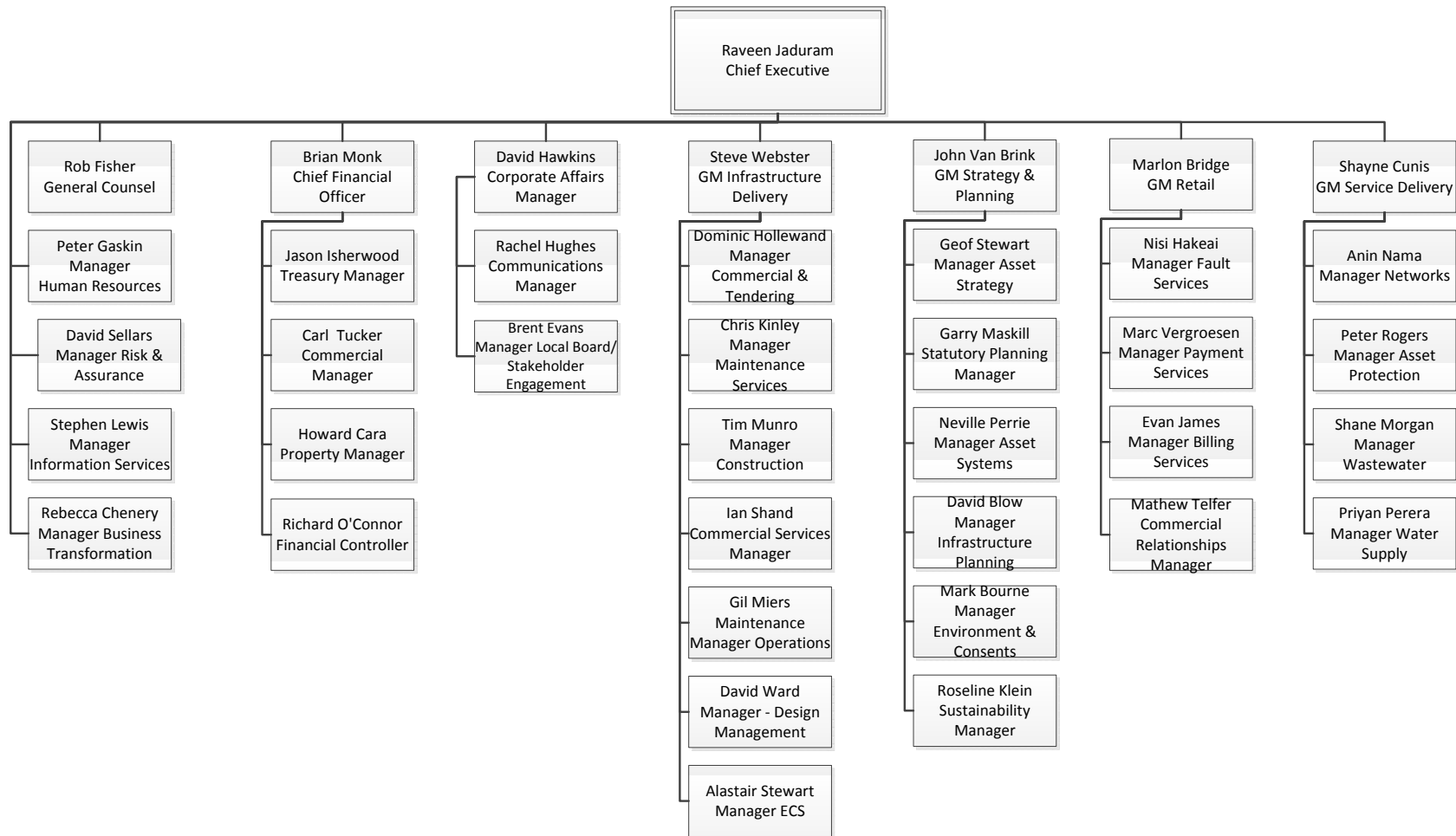
Report prepared by:

Approved by:

R Chenery
Manager, Business Transformation

R Jaduram
Chief Executive

CHIEF EXECUTIVE, GENERAL MANAGER AND DIRECT REPORTS ORG STRUCTURE OCTOBER 2015



Board - Public Session - Chief Executive's Report and Scorecard

WATERCARE SCORECARD 2015/16

On budget, on time, within parameters			Unfavourable but within parameters			Major issue, needs attention												
	SOI	2015/16 Target	Amber Threshold	Red Threshold	Oct-14	Nov-14	Dec-14	Jan-15	Feb-15	Mar-15	Apr-15	May-15	Jun-15	Jul-15	Aug-15	Sep-15	Oct-15	
1 Safe and Reliable Water																		
1a		100%	n/a	<100%	100%	100%	100%	100%	100%	100%	100%	100%	100%	100%	100%	100%	100%	100%
1b		100%	n/a	<100%	100%	100%	100%	100%	100%	100%	100%	100%	100%	100%	100%	100%	100%	100%
1c		100%	n/a	<100%											100%	100%	100%	
1d		100%	n/a	<100%														
1e		100%	n/a	<100%														
1f		50%	n/a	<45%														
1g		50%	n/a	<25%														
1h		≥95%	93% to ≥95%	<93%	97%	97%	97%	97%	97%	97%	97%	97%	96%	96%	96%	96%	96%	96%
1i		≤10	>10 to 12	>12	7.9	7.8	7.7	7.5	7.5	7.2	7.0	6.8	6.6	6.6	6.4	6.2	5.9	
1j		Unrestricted	Subjective	Restrictions apply	Unrestricted	Unrestricted	Unrestricted	Unrestricted	Unrestricted	Unrestricted	Unrestricted	Unrestricted	Unrestricted	Unrestricted	Unrestricted	Unrestricted	Unrestricted	Unrestricted
1k		Unrestricted	Subjective	Restrictions apply	Unrestricted	Unrestricted	Unrestricted	Unrestricted	Unrestricted	Unrestricted	Unrestricted	Unrestricted	Unrestricted	Unrestricted	Unrestricted	Unrestricted	Unrestricted	Unrestricted
2 Healthy Waterways																		
2a		≤5	>5 to 7	>7	2.04	2.00	2.06	2.16	2.10	2.05	2.02	1.94	1.86	1.80	1.90	1.91	1.81	
2b		≤2 overflows per year per engineered overflow point	Low risk non-compliance	High risk non-compliance										Projected	Projected	Projected	Projected	
2c		≤10	>10 - ≤15	>15										0.03	0.03	0.04	0.03	
2d		a) ≤2 b) ≤2 c) ≤2 d) ≤2	n/a	>2 (for any)										0	0	0	0	
2e		≤10	>10 to ≤12	>12	8.50	8.40	8.30	8.20	8.20	7.90	7.70	7.70	7.30	7.10	7.00	7.00	6.60	
2f		100%	98 to <100%	<98%									99.22%	100%	100%	100%	100%	
2g		35%	n/a	<35%									77%	84%	84%	88%	87%	
3 Customer Satisfaction																		
3a		≤60 mins	>60 - ≤90 mins	>90 mins										33 mins	34 mins	35 mins	35 mins	
3b		≤5 hours	>5 - ≤8 hours	>8 hours										1.5 hours	1.5 hours	1.6 hours	1.6 hours	
3c		≤3 days	>3 - ≤5 days	>5 days										1.2 days	1.2 days	1.3 days	1.8 days	
3d		≤6 days	>6 - ≤8 days	>8 days										2.2 days	2.3 days	2.7 days	2.9 days	
3e		≥80%	≥75% to <80%	<75%	88.1%	88.8%	87.0%	88.3%	86.1%	83.5%	87.6%	84.4%	88.2%	84.6%	87.0%	86.0%	85.3%	
3f		≤10	>10 - ≤15	>15										7	7	6.9	6.7	
3g		≤60 mins	>60 - ≤90 mins	>90 mins										40 mins	40 mins	41 mins	41 mins	
3h		≤5 hours	>5 - ≤8 hours	>8 hours										2.3 hours	2.3 hours	2.3 hours	2.4 hours	
3i		≤50	>50 - ≤75	>75										20.7	20.7	20.7	20.7	
3j		≤5	>5 to ≤5.5	>5.5	5.9	5.8	5.7	5.3	4.80	4.80	4.80	4.80	4.70	4.70	4.60	4.90	4.70	
3k		≥95%	≥90% to <95%	<90%	95.0%	95.0%	96.3%	96.6%	96.8%	97.6%	98.1%	98.5%	98.5%	98.3%	98.9%	98.2%	97.4%	
3l		100%	100%	100%	100%	100%	100%	100%	100%	100%	100%	100%	100%	100%	100%	100%	100%	
4 Health, Safety and Wellbeing																		
4a		≤5	5 - 7	>7	6.79	7.93	8.48	7.86	7.20	5.34	4.47	5.31	6.42	6.4	5.8	5.23	4.63	
4b		≤2.5%	>2.5 to 3.5%	>3.5%	2.06%	2.04%	2.03%	2.05%	2.08%	2.08%	2.07%	2.07%	2.09%	2.10%	2.09%	2.15%	2.14%	
4c		≤12%	>12 to 14%	>14%	11.09%	10.37%	9.64%	10.36%	10.68%	11.00%	11.19%	11.14%	10.84%	11.16%	10.86%	11.45%	11.28%	
4d		<30	>30 to <33	>33	16.88	18.30	18.78	15.11	19.79	17.20	18.33	19.45	19.84	18.65	19.13	16.86	16.80	
5 Financial Responsibility																		
5a		≥2.5	2.4 to <2.5	<2.4	3.38	3.32	3.35	3.40	3.38	3.45	3.40	3.34	3.32	3.69	3.51	3.62	3.62	
5b		≤1.5%	1.2 to <1.5	>1.5	0.90%	0.90%	0.90%	0.91%	0.91%	0.92%	0.92%	0.92%	0.87%	0.87%	0.87%	0.87%	0.87%	
5c		≥100%	≥98% to <100%	<98%	101%	100%	99%	100%	100%	100%	100%	100%	100%	101%	101%	101%	102%	
5d		≥100%	≥95% to <100%	<95%	189%	167%	173%	164%	156%	156%	149%	146%	147%	102%	108%	114%	102%	
5e		≤100%	>100 to <102%	>102%	99%	98%	99%	99%	98%	98%	99%	101%	101%	94%	95%	93%	93%	
5f		+	-\$0.1m to -\$2m	> -\$2m	18.18	18.48	22.37	26.79	27.94	26.76	24.98	22.53	26.13	3.09	8.30	13.72	17.74	
5g		+	-\$0.1m to -\$2m	> -\$2m	-22.12	-28.00	-43.59	-90.04	-74.28	-76.19	-67.08	-63.05	-66.59	-21.81	-16.16	-27.62	-21.55	
5h		Negative	\$0.1m to \$10m	> \$10m	-20.40	-25.50	-29.70	-34.80	-49.30	-71.70	-71.20	-86.10	-79.40	-22.40	-15.20	-21.90	-40.20	

4

Board - Public Session - Chief Executive's Report and Scorecard

WATERCARE SCORECARD 2015/16

On budget, on time, within parameters Unfavourable but within parameters Major issue, needs attention

	SOI	2015/16 Target	Amber Threshold	Red Threshold	Oct-14	Nov-14	Dec-14	Jan-15	Feb-15	Mar-15	Apr-15	May-15	Jun-15	Jul-15	Aug-15	Sep-15	Oct-15	
6 Fully Sustainable																		
6a	The average consumption of drinking water per day per resident (gross PCC) (12 month rolling average)	☑	272 +/- 2.5%		269	267	266	273	273	273	273	273	271	271	271	271	271	
6b	Per capita consumption (litres / person / day) - Residential Monthly PCC		Information only		144	156	163	170	170	163	155	151	149	148	Reporting lag - data sourced from meter readings		148	
6c	Non-Domestic Monthly Water Volume		Information only		2,889,481	2,858,163	2,892,951	2,898,831	3,079,838	3,344,422	2,864,637	2,910,993	2,913,178	2,845,386	Reporting lag - data sourced from meter readings		2,863,774	
6d	Non-Revenue Water Percentage		Information only											16.72%	16.80%	16.81%	16.76%	
6e	The percentage of real water loss from the local authority's networked reticulation system (rolling 12 mth average)	☑	≤13%	>13 to 13.2%	>13.2	13.45%	13.58%	13.66%	13.89%	13.66%	13.66%	13.50%	13.31%	12.95%	12.89%	13.00%	13.10%	13.04%
6f	Percentage of annual potable water transmission system losses (12 month rolling average)		No specific target - information only											1.70%	1.89%	1.85%	1.89%	
6g	Percentage of annual potable water network losses (12 mth rolling average) - Urban as a percentage of total volume		No specific target - information only		13.42%	13.17%	13.40%	13.67%	13.49%	13.54%	13.38%	13.21%	12.85%	12.59%	12.73%	12.81%	12.82%	
6h	Percentage of annual potable water network losses (12 mth rolling average) - Rural as a percentage of total volume		No specific target - information only											0.44%	0.44%	0.43%	0.42%	
6i	Percentage of annual potable water network losses (12 mth rolling average) - Rural as a percentage of rural volume		No specific target - information only		25.92%	25.22%	25.19%	24.95%	23.92%	20.85%	20.35%	19.51%	19.06%	27.75%	27.67%	27.16%	26.62%	
7 Policy Compliance																		
7a	Compliance with Treasury Policy		Within policy	Planned outside policy	Unplanned outside policy	Within policy	Within policy	Within policy	Within policy	Within policy	Within policy	Within policy	Within policy	Within policy	Within policy	Within policy	Within policy	

4

Watercare Services Limited

Subject: Chief Executive Report – October 2015

Date: 13 November 2015

1. HEALTH AND SAFETY

There were no Lost Time Injuries in October 2015. The rolling 12 month Lost Time Injury Frequency Rate (per million hours worked) was 4.63 against a target maximum of 5. The rolling 12 month Total Recordable Injury Frequency Rate (per million hours worked) was 16.85 (target maximum 30).

2. CUSTOMER SERVICES

Performance against Statement of Intent measures for October was good with all customer service performance metrics above target for the month. The rolling 12 month average result for resolution of complaints within 10 working days was 97.4% against a target of 95%. Customer satisfaction in October was in line with the 12 month average with satisfaction at 86.8% for fault management, 83.1% for the maintenance field crews and 85.8% for billing and general enquires. The rolling 12 month average for customer satisfaction is above the 80% target for all three areas.

3. INFRASTRUCTURE AND PLANNING

The infrastructure capital programme has delivered year to date \$83.5m against a budget of \$113.2m. The forecast to year end is to deliver \$335m against a budget of \$375.0m, 89%.

Watercare staff continue to engage with Auckland Council around the implications of the Proposed Auckland Unitary Plan. The Draft Future Urban Land Supply Strategy is being finalised by Auckland Council. Indications are that the sequencing of greenfields land for development will be largely as proposed in the draft. Council staff are also revising their growth forecasts; these are not expected to be available until February next year. Given recent information around the low uptake within the 97 SHA's, there is still uncertainty around timing and location of growth. Tranche 9 SHA's will be notified before Christmas.

A Capital Expenditure Dashboard Report of all capital expenditure projects over \$2million is shown in Appendix C.

4. SERVICE DELIVERY

Rainfall and Water Resources

In October the Auckland region experienced well below average rainfall in all catchments:

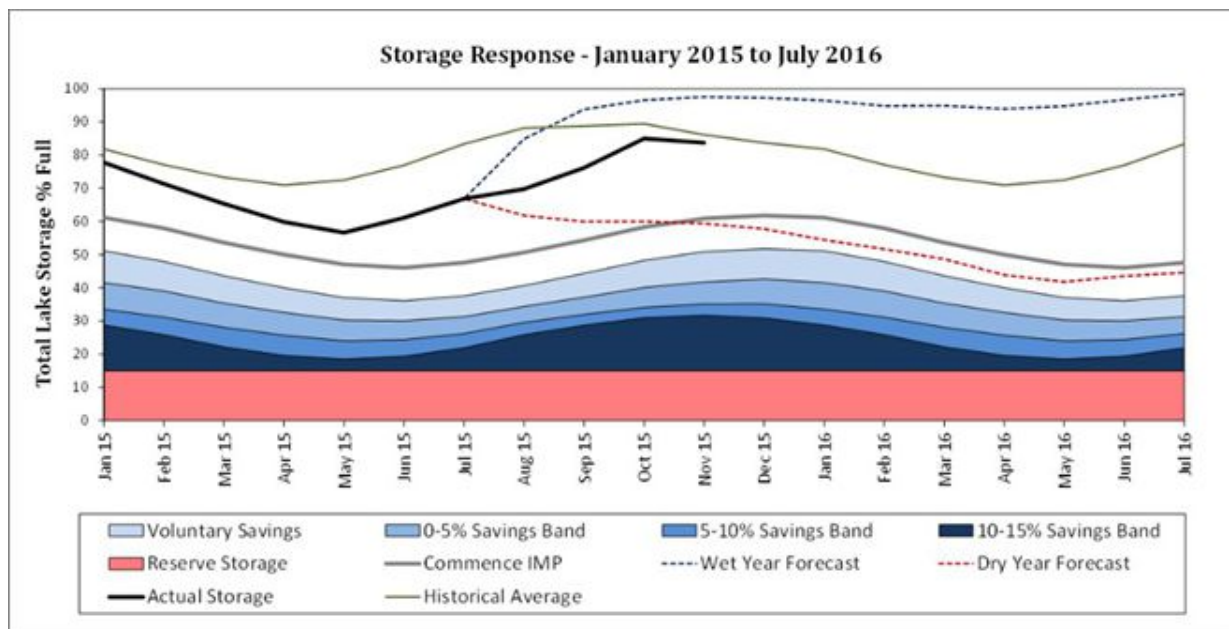
Waitakere Ranges	40% of average
Hunua Ranges	50% of average
Northern Non-metropolitan	42% of average
Southern Non-metropolitan	56% of average

Metropolitan total system storage decreased from 85.0% to 83.7%. This is below the historical average storage for the end of October (86.1%). Weather forecasts for November 2015 indicate rainfall is expected to be normal or below normal, and temperature to be average or below average. Longer

term, for November – January 2016, temperatures are most likely to be average or below average, with rainfall most likely to be near or below normal.

Atmospheric and oceanic conditions reflect strong El Niño conditions. International guidance indicates that El Niño will continue over the next three months. The current event is slightly weaker than the 1997/98 El Niño (the strongest since 1950) at this stage, but is expected to intensify further and peak in the summer months.

Waikato WTP continues to be operated at higher flows to conserve stored water levels, along with minimising the production from the Ardmore WTP.



Waiuku Water Supply

There are two issues impacting on the Waiuku Water Supply at this time:

- Levels of arsenic were detected in one of Waiuku’s three water sources at slightly above the 50% of the Drinking Water Standards for New Zealand (Revised 2008) Maximum Acceptable Value of 0.01mg/L.

Design of the pilot plant for arsenic removal at the Victoria Ave WTP has progressed significantly in the month and it remains on track to be in operation by Christmas 2015. All recent water quality results for Arsenic from this source have been slightly below 50% of the Maximum Acceptable Value.

- The Waiuku supply area has non-revenue water in the order of 40%. Demand on the system has exceeded the consented volumes. This is exacerbated by non-revenue water losses in the area being in the order of 40%. Leakage investigations are being undertaken and early indications are that the high level of non-revenue water may be related to meterw under-recording. A programme for replacement of aged meters is underway, with the old meters being replaced with smart meters. Three district meters have now been installed and commissioned.

Lower Huia Raw Watermain Reinstatement

The temporary pipeline across the slip site at Huia Dam Road was installed during October. This allows abstraction of up to 30MLD and ensures that the lake can be used to prevent it from spilling. It also

enables the Huia lakes to be operated conjunctively to get the maximum yield from the system if required.

Works on the permanent solution, including the installation of the bridge and pipeline is on track to be completed by August 2016.

Public Health Grading of Water Supplies

Auckland Regional Public Health Services completed grading of all water treatment plants and water distributions networks in late October / early November. All WTPs achieved an 'A' grade and all water distributions networks achieved an 'a' grade. This means that the Statement of Intent measure to have 100% of the water system graded 'Aa' has been achieved some 5 years before the target of 2020. This is testimony to the upgrades to the facilities and the systems undertaken by Watercare post integration.

Expansion of Waikato WTP to 175MLD

The business case to increase the Waikato WTP production capacity from 150MLD to 175MLD was approved by the Board in February 2015. The first work package to be delivered is the sand removal system prior to the clarifiers. The equipment has been ordered and will arrive in New Zealand in late November. The installation contractor has commenced on site and remains on track to meet the operational date of February 2016. The methodology adopted requires a single outage of the WTP in January.

5. FINANCE

Financial Performance

Figures (\$millions)	Current Month			Year to Date			Full Year		
	Actual	Budget	Var	Actual	Budget	Var	Forecast	Budget	Var
Revenue	48.02	45.11	2.92	185.07	174.48	10.59	547.31	537.17	10.14
Operating Expenses	16.87	17.97	1.10	65.81	70.75	4.94	210.08	212.77	2.69
Depreciation	18.57	18.22	(0.35)	70.94	72.12	1.18	216.83	217.12	0.29
Interest expense	6.34	6.70	0.36	25.40	26.43	1.03	76.50	78.21	1.71
Total Contribution	6.24	2.21	4.02	22.91	5.17	17.74	43.90	29.07	14.83
Non-operating costs/(income)	1.20	0.21	(0.99)	2.54	0.81	(1.74)	6.00	3.00	(3.00)
Financial instruments revaluation - loss/(gain)	(1.21)	-	1.21	39.39	-	(39.39)	39.39	-	(39.39)
Operating Surplus / (Deficit) Before Tax	6.25	2.01	4.24	(19.01)	4.37	(23.38)	(1.48)	26.07	(27.56)
Deferred Tax - Expense/(Credit)	(4.63)	0.18	4.81	(0.81)	5.65	6.46	16.94	21.49	4.55
Net Surplus / (Deficit) After Tax	10.88	1.83	9.05	(18.21)	(1.28)	(16.93)	(18.43)	4.58	(23.01)
FFO Ratio				3.62	3.16		3.39	2.94	
Operating EBITDAF	31.15	27.14	4.01	119.26	103.73	15.53	337.23	324.40	12.83
EBITDA	31.16	26.94	4.23	77.33	102.93	(25.59)	291.85	321.40	(29.56)
EBIT	12.59	8.71	3.88	6.39	30.80	(24.41)	75.02	104.28	(29.27)

Month – Total Contribution of \$6.24 m - favourable variance to budget of \$4.02m

Total revenue was favourable \$2.92m to budget due to vested asset income favourable by \$3.1m, water and wastewater revenue favourable by \$1.4m and partially offset by unfavourable IGC revenue \$1.5m.

Operating expenses were favourable \$1.10m to budget with favourable variances for asset operating costs, professional services and general overheads.

Depreciation was unfavourable \$0.35m to budget.

Interest expense was \$0.36m favourable to budget.

Year to date – Total Contribution of \$22.91m - favourable variance of \$17.74m

Year to date revenue is \$10.59m favourable to budget primarily due to vested asset income favourable \$7.39m and IGC revenue favourable \$0.34m. Water and wastewater revenue is \$2.82m favourable to budget with year to date water volumes 0.88% over budget.

Operating expenses are \$4.94m favourable to budget with favourable variances for asset operating costs, professional services and general overheads.

Depreciation is favourable \$1.18m to budget.

Interest expense is \$1.03m favourable to budget.

Year to Date – Net Deficit after Tax of \$18.21m – unfavourable variance of \$16.93m

The unfavourable variance of \$16.93m is primarily due to an unfavourable revaluation of financial instruments of \$39.4m resulting from the decrease in medium to long term swap rates since June 2015 partially offset by the \$17.74m favourable operating contribution.

Full year Forecast – Operating Contribution of \$43.90m – favourable variance of \$14.83m

Full year revenue is forecast at \$547.3m, favourable by \$10.1m largely due to expected higher than budgeted vested asset revenue favourable \$7.4m. Water and wastewater revenue forecasts are being held at budgeted levels as we move into the high volume summer months and await the impact of summer weather on water volumes.

Operating expenses are favourable to budget with favourable variances for professional services and general overheads partially offset by asset operating costs.

Depreciation costs are forecast to be favourable \$0.3m at year end.

Interest expensed through the P&L is expected to be \$1.7m lower than budget at year end; largely due to lower debt than budgeted.

Financial Position

\$million	Actual Sep-15	Actual Oct-15	Monthly Movement	Budget Oct-15	Var from Budget
Non Current Assets	8,626.5	8,632.9	6.4	8,674.7	(41.9)
Current Assets	81.3	81.7	0.4	76.9	4.8
Total Assets	8,707.8	8,714.6	6.8	8,751.6	(37.1)
Other Liabilities	307.0	309.9	2.8	282.6	27.3
Deferred Tax Liability	1,015.0	1,010.3	(4.7)	1,025.5	(15.2)
Borrowings - Short Term	223.7	373.0	149.3	350.0	23.0
Borrowings - Long Term	1,316.5	1,164.9	(151.7)	1,228.1	(63.2)
Shareholders Funds	5,845.6	5,856.5	11.0	5,865.4	(9.0)
Total Liabilities and Shareholders Funds	8,707.8	8,714.6	6.8	8,751.6	(37.1)

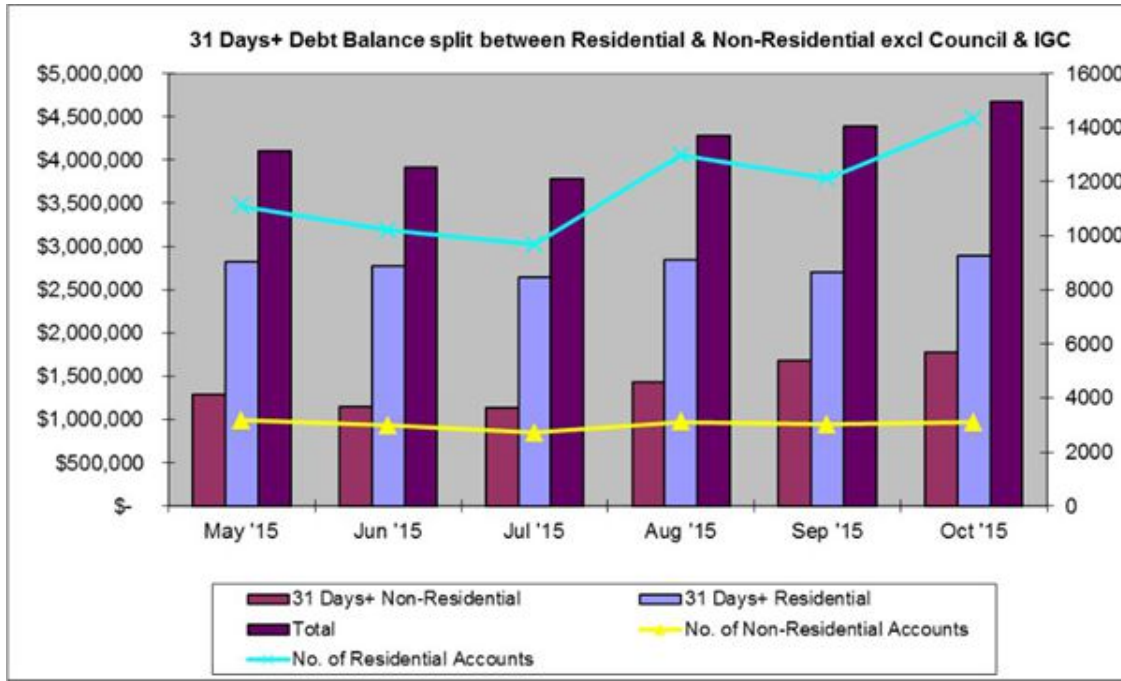
The major movement in the Statement of Financial Position as at 31 October 2015 compared with 30 September 2015 was the increase in non-current assets reflecting capital expenditure net of depreciation in the month.

Compared with budget the material variances are largely in respect of the property, plant and equipment, deferred tax, derivative financial instruments (Other liabilities) and debt. The variances primarily reflect a different opening position on 1 July 2015 than that assumed when the budget was set, including a lower level of revaluation of property, plant and equipment than expected. Net debt at \$1,538m is \$40.2m beneath budget.

Aged Receivables

The 31 days+ debt balance at the end of October was \$4.7m, \$0.29m higher than September 2015.

The split of 31 days+ receivables between residential and commercial is shown below:



Water Utility Consumer Assistance Trust (WUCAT)

The following tables summarise the results of the Trust:

Oct 2015

WUCAT Summary		
Financial year	Trust approved applications (includes WSL additional write offs)	\$000's
Jun-12	33	\$ 29
Jun-13	172	\$ 196
Jun-14	123	\$ 114
(YTD) Jun-15	196	\$ 183
Total	524	\$ 521

WUCAT Summary last 3 meetings		
Month	Trust approved applications	\$000's
Aug-15	12	\$ 7.76
Sep-15	9	\$ 7.18
Oct-15	12	\$ 11.23
Total	33	\$ 26

A total of 524 applicants have successfully completed the budget advisor review process and these applicants have had \$521k of hardship relief approved by the Trust. This has resulted in \$425k being written-off as payment plans have been completed. For various reasons, 44 applicants did not fully complete their agreed payment plans. These applicants have foregone \$38k of approved hardship

relief. A further 35 applicants continue with their payment arrangements, with a further \$58k of approved hardship write-offs to be granted once they successfully complete their plan.

The results of the last three WUCAT meetings have seen 33 applicants successfully complete the budget process and have \$26k of hardship relief approved by the Trust.

Restrictions

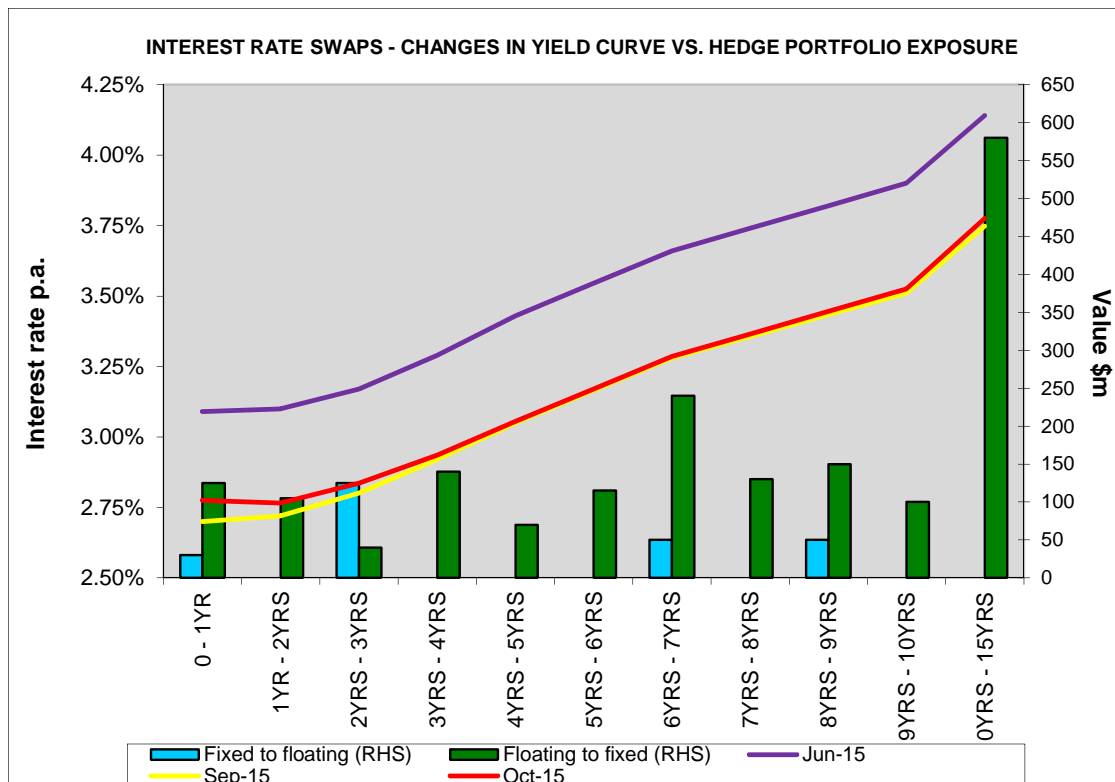
One new water restriction was actioned during the month and four restrictions were removed. The table below summarises the restrictions carried out by Watercare Services Limited.

Restriction Summary Year-ending	Commercial		Residential		Total	
	Restriction	De-restriction	Restriction	De-restriction	Restriction	De-restriction
30-Jun-12	1		5		6	0
30-Jun-13	13	11	6	4	19	15
30-Jun-14	20	20	17	14	37	34
30-Jun-15	31	30	53	39	84	69
(YTD) 30-Jun-16	4	4	13	9	17	13
Total	69	65	94	66	163	131
Restrictions currently	4		28		32	

The following restrictions remain in place:

- Six residential restrictions remain in place on vacant properties. Communications are ongoing with these customers and if the properties are tenanted in future, a resolution will be required.
- A further 22 residential restrictions remain in place on occupied properties and communication continues with these customers.
- Four commercial properties remain restricted at the end of October and communication continues with these customers.

Treasury



Interest Analysis \$million	Current Month			Year to date			Full Year		
	Actual	Budget	Var	Actual	Budget	Var	Forecast	Budget	Var
Interest as per Statement of Financial Performance	6.34	6.70	0.36	25.40	26.43	1.03	76.50	78.21	1.71
Capitalised Interest	1.19	1.36	0.17	4.57	5.30	0.73	17.77	18.50	0.73
Gross Interest	7.54	8.07	0.53	29.97	31.74	1.77	94.27	96.71	2.44
Less Interest Income	-	-	-	0.02	-	(0.02)	0.02	-	(0.02)
Net Interest	7.54	8.07	0.53	29.96	31.74	1.78	94.25	96.71	2.46

For the month net interest is favourable to budget \$0.53m; largely due to lower debt than budgeted.

Capital Expenditure

Capital expenditure for the month was \$24.0m against a budget of \$28.8m.

Summary Capital Expenditure (\$millions)	Month November 2015			Year to Date			Full Year		
	Actual	Budget	Var	Actual	Budget	Var	Forecast	Budget	Var
Infrastructure Wastewater Projects	13.3	15.4	2.1	43.3	60.8	17.5	183.1	206.2	23.1
Infrastructure Water Projects	7.1	7.8	0.7	34.0	37.5	3.5	111.1	118.2	7.1
Operations	2.1	3.1	1.0	5.8	14.4	8.6	40.5	47.4	6.9
Maintenance Services	0.2	0.2	0.0	0.6	1.5	0.9	4.0	4.7	0.7
Information Services	0.6	0.9	0.3	2.6	3.4	0.8	6.7	7.4	0.7
Other Projects	0.7	1.4	0.7	2.6	4.6	2.0	8.1	12.9	4.8
TOTAL	24.0	28.8	4.8	88.9	122.2	33.3	353.5	396.8	43.3
Includes:									
Water Projects Capitalised Interest	0.5	0.6	0.1	2.1	2.4	0.4	7.8	8.2	0.4
Wastewater Projects Capitalised Interest	0.7	0.8	0.1	2.5	2.9	0.4	10.0	10.3	0.4
Total Capitalised Interest	1.2	1.4	0.2	4.6	5.3	0.7	17.8	18.5	0.7

6. BOARD CORRESPONDENCE

There was no Board correspondence.

7. EXECUTION OF DOCUMENTS

There were seven documents executed during October in accordance with the delegated authority provided to the Chief Executive by the Board in relation to deeds, instruments and other documents. These included five approvals to register easements, one approval to surrender an easement and one approval to surrender a Public Works Act 1981 compensation certificate.

There were four capex approvals totaling \$1.928m signed in accordance with the delegated authority provided to the Chief Executive by the Board in relation to capex approvals below a threshold of \$15m.

Summary of Capital Projects approved by Chief Executive – October 2015		
C-12001-04	Snells Algies Outfall Upgrade - Early Works Package Capex Approval	\$1,770,000
C-12261-03	Approval for the Replacement of Motor Vehicle DYB450	\$45,000
C-12576-01a	Maintenance Services Operations North West - Small plant & tools procurement Capex Extension	\$35,006
C-12586-01-02-03	Watermain Renewal in Longfellow Parade - Glen Eden	\$78,234

There were nine contracts over \$100,000 awarded during October in accordance with the delegated authority provided to the Chief Executive by the Board in relation to capex and opex contract approvals.

Summary of Contract Awards – October 2015		
1/10/2015	Controlweb Ltd	Rain Gauge Data Logger Replacement
5/10/2015	Pipeline and Civil	CT6216: Lower Huia Civils Installation
9/10/2015	Construction Techniques Ltd	Eastern Interceptor Rehabilitation
12/10/2015	Civil Underground Limited	Army Bay WWTP Odour Extraction System Upgrade Construction Contract
19/10/2015	Fulton Hogan John Holland JV	Hunua No 4 Section 10 Construction
21/10/2015	Kerry Drainage Limited	CT 6119: Saffron Street Wastewater Upgrade
27/10/2015	WSL Labs	Central Interceptor Detailed Design Odour & Sewage Sampling/Testing
29/10/2015	Filtration Technology Ltd.	Helensville WWTP Upgrade Phase 2 (M & E Construction Work) – CT 5649 (Contract extension)
29/10/2015	Fulton Hogan	Mangere BNR Upgrade - Road Construction

8. COMMUNICATIONS

Media summary

The release of the Productivity Commission's *Using Land for Housing* report was covered by Radio NZ and Hive News. In a turn-around from the Commission's draft document, the final report recommended Watercare change its approach to calculating IGCs to better reflect the underlying economic costs of supply in different locations and for different types of dwelling. This was covered by the media outlets.

The Franklin County News and The Post both ran positive articles on our South-West Wastewater Servicing Project. The publications drew key information from a stakeholder newsletter that was distributed in the area at the time.

The impact of flushable wipes on wastewater networks continues to be topical. In October, the NZ Herald ran another story on this topic, with a Watercare spokesperson quoted as saying: "We urge

Aucklanders to simply put all used wipes in the rubbish bin. The only things that should be flushed down the loo are human waste and toilet paper.” This message will continue to be communicated through our customer newsletters and flyers.

Customer Communications Programme

The table below outlines the indicative customer communications programme. This programme is dynamic and will be adapted as appropriate to align to the new strategic priorities and respond to current issues/areas of interest.

Month	Activity	Status
October	Domestic customers received a flyer on the Ministry for the Environment’s water efficiency labelling scheme. Domestic customers in Te Atatu Peninsula received a newsletter with their bills in response to community concern over an overflow point in the area. Its purpose was to educate home owners on the significant impact stormwater has on our network. We explained how private wastewater drains are a major contributor to wet-weather overflows and the role homeowners can play in reducing them.	Distribution complete
Mid-Nov to mid-Dec	Domestic and non-domestic customers are receiving the summer issue of <i>Tapped In</i> which focuses on using water wisely. It features story on a family benefiting from our water advice line; an info-graphic with staff sharing their waterwise tips; information on visiting Cosseys Dam; and a story congratulating Wal McQuarrie on 45-years of service.	Being distributed.
Mid-Jan to mid-Feb	Domestic customers will receive a flyer on Watercare’s involvement in Round the Bays. Domestic customers in Helensville will receive an update on Watercare’s work to secure a new water supply and to upgrade the local wastewater treatment plant.	Planned
Mid-Feb to mid-March	Domestic and non-domestic customers will receive the autumn issue of <i>Tapped In</i> which will focus on leaks.	Planned

Internal communications

Completed:

- Staff celebrated Watercare’s fifth birthday as a water retailer with cake and a special-edition Your Source.

Planned/Underway:

- Homesafe, the informational H&S poster, will be distributed to staff in mid-November. It will focus on managing fatigue.
- A new intranet will be launched early 2016. It is currently being built and tested.

Stakeholder communications

Completed:

- In early November, nearly 100 members of the public enjoyed a tour of the Ardmore Water Treatment Plant.
- Since 1 July, Watercare has received 24 enquiries under the Official Information Act. This is a significant increase on previous years.

- Continued to create and implement stakeholder engagement plans for a range of infrastructure projects, both in the planning and construction stages. With respect to Hunua 4, a meeting was held with St Cuthbert's to discuss works and best methods of communication for parents. With respect to the Huia Water Treatment Plant project, a meeting with key stakeholders to discuss a location for the new plant is planned for 18 November.

Planned/underway:

- In mid-November, 70 members of the public will enjoy a tour of the Rosedale Wastewater Treatment Plant.
- Work is underway to update the information at the Mangatangi Visitors Centre.
- Work is underway to produce a book illustrating the water treatment and distribution process, from dam to tap.
- A project is underway to produce nine videos: one will welcome new staff to Watercare; two will cover water and wastewater treatment; and six will cover the day in the life of employees.

9. WORKING WITH LOCAL BOARDS

Local Board workshop briefings were held with the Hibiscus and Bays, Mangere Otahuhu, Rodney, Upper Harbour, and Waitakere Ranges Local Boards on a number of Watercare projects.

A full schedule of local board interactions over the month is attached as Appendix D.

10. STATUTORY PLANNING

Auckland Proposed Unitary Plan

The upcoming Proposed Auckland Unitary Plan hearings of interest to Watercare are designations (end November), the Rural Urban Boundary (site specific hearings early 2016), and rezoning (early 2016). Watercare's hearing on designations is scheduled for 30 November. Almost all submissions on Watercare's 250 designations have now been resolved. Two of key submissions that were still outstanding as of last month have now been resolved: Ngati Tamatera Treaty Settlement Trust and Cornwall Park Trust Board. Heritage New Zealand's submission is not yet completely resolved but significant progress has been made. This is expected to be resolved before the hearing. Council is also working on the submissions related to rezoning, precinct, and RUB realignment; these topics will be heard early next year. Watercare prepared evidence for the RUB realignment hearing, and is currently preparing evidence to support Council's case on rezoning.

11. MAORI ENGAGEMENT

Te Toa Takitini Programme

Watercare is a member of the Te Toa Takitini Steering Committee, which has been established by Auckland Council to contribute to Maori wellbeing. The Te Toa Takitini programme aims to significantly lift Maori social and economic wellbeing. The programme comprises five work streams: Maori Economic Wellbeing, Maori Social Wellbeing, Maori Cultural Wellbeing, Effectiveness for Maori, Treaty of Waitangi settlements.

Watercare's contribution falls within the Maori Cultural Wellbeing work stream and is included in the Maori Transformational Shift Activities 2015-2018.

Mana Whenua Kaitiaki Forum

The next Kaitiaki Managers Group meeting is on 12 November and the next Kaitiaki Forum meeting is in January 2016

The principal agenda items for the Managers meeting are:

- South-West Sub-Regional Wastewater Servicing
- Department of Conservation – statutory authorisations process
- Wai Ora Wai Māori

.....

R Jaduram
CHIEF EXECUTIVE

WATERCARE SERVICES LIMITED
Management Report

Oct-15

Table of Contents

Section A : Management Report	Page
1 Financial Results	
● Statement of Financial Performance	A1
● Statement of Cash Flows	A2
● Statement of Financial Position	A4
2 Treasury Management	
● Treasury Risks & Interest Rate Performance	A5
● Counterparty Exposures, Debt Concentration & Covenant Compliance	A6
● Foreign Exchange & Commercial Paper Maturity	A7

WATERCARE SERVICES LIMITED

Oct-15

Key Financial Indicators

Financial performance	YTD	Page Ref
Total Revenue	●	A1
Operating Costs	●	A1
Interest expense	●	A1
Depreciation	●	A1
Net Contribution	●	A1
Financial position		
Net Borrowings	●	A4
Cashflow		
Operating cashflow	●	A2
Investing cashflow	●	A2
Treasury policy	Compliance	Page Ref
Committed facilities (liquidity risk)	●	A5
Fixed interest rate risk	●	A5
Credit risk	●	A6
Funding risk	●	A6, A7
Foreign exchange risk	●	A7

Key to Financial performance, Financial position and cashflow measures



Favourable variance - actual result on or above budget for total revenue, net contribution, operating cash flow and actual result below budget for operating expenses, interest, depreciation, net borrowings and investing cash flow



Unfavourable variance - actual result below budget for total revenue, net contribution, operating cash flow and actual result above budget for operating expenses, interest, depreciation, net borrowings and investing cash flow

Key to Treasury policy compliance



Full compliance

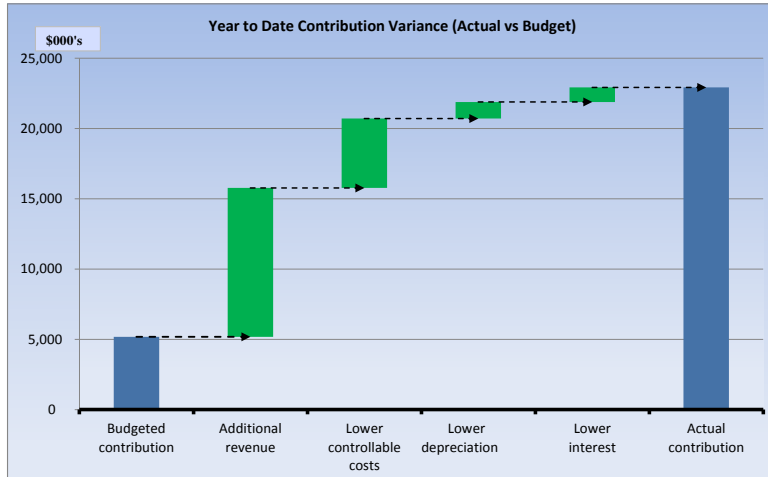


Non compliance

WATERCARE SERVICES LIMITED												Oct-15
STATEMENT OF COMPREHENSIVE REVENUE AND EXPENSE												(\$000's)
	Current Month				Year to Date				Full Year			
	Actual	Budget	Variance	Result	Actual	Budget	Variance	Result	Forecast	Budget	Variance	Result
Wastewater revenue	26,571	25,396	1,176	✓	100,691	98,123	2,569	✓	302,855	300,286	2,569	✓
Water revenue	11,961	11,713	248	✓	45,878	45,625	253	✓	143,235	142,982	253	✓
Infrastructure growth charge revenue	4,079	5,622	(1,542)	✗	19,384	19,042	342	✓	57,477	57,520	(43)	✗
Other revenue	1,485	1,514	(29)	✗	8,278	8,244	33	✓	26,016	26,044	(29)	✗
Revenue from exchange transactions	44,096	44,244	(147)	✗	174,231	171,034	3,197	✓	529,583	526,832	2,750	✓
Vested assets revenue	3,925	861	3,064	✓	10,837	3,446	7,391	✓	17,729	10,338	7,391	✓
Revenue from non-exchange transactions	3,925	861	3,064	✓	10,837	3,446	7,391	✓	17,729	10,338	7,391	✓
Total revenue	48,022	45,105	2,917	✓	185,068	174,480	10,588	✓	547,312	537,170	10,141	✓
Labour	5,931	6,414	483	✓	24,102	25,588	1,487	✓	77,084	78,478	1,394	✓
Contract labour	164	188	23	✓	573	774	201	✓	2,531	2,274	(257)	✗
Oncosts	262	307	44	✓	998	1,202	204	✓	3,514	3,718	204	✓
Labour recoveries	(2,614)	(3,323)	(709)	✗	(11,238)	(13,058)	(1,820)	✗	(38,089)	(39,436)	(1,347)	✗
Net labour	3,743	3,584	(159)	✗	14,435	14,506	72	✓	45,041	45,035	(6)	✗
Materials & cost of sales	175	185	9	✓	712	706	(6)	✗	2,165	2,106	(59)	✗
Planned maintenance	896	1,586	690	✓	4,614	4,953	338	✓	17,463	16,002	(1,461)	✗
Unplanned maintenance	4,037	2,701	(1,336)	✗	11,769	11,224	(544)	✗	33,690	32,542	(1,148)	✗
Asset operating costs - chemicals	904	909	5	✓	3,106	3,248	142	✓	10,990	10,653	(338)	✗
Asset operating costs - energy	1,320	1,361	41	✓	6,141	5,964	(177)	✗	18,366	17,801	(565)	✗
Operating costs - other	2,619	3,473	854	✓	12,515	13,696	1,181	✓	41,735	42,855	1,120	✓
Depreciation and amortisation	18,572	18,222	(350)	✗	70,943	72,123	1,180	✓	216,830	217,122	292	✓
Asset operating costs	28,347	28,250	(97)	✗	109,088	111,208	2,120	✓	339,074	336,975	(2,099)	✗
Communications	146	173	26	✓	658	678	20	✓	2,000	2,019	19	✓
Professional services	749	1,398	649	✓	2,954	5,682	2,727	✓	10,600	14,637	4,037	✓
Interest	6,342	6,704	362	✓	25,402	26,435	1,033	✓	76,500	78,207	1,707	✓
General overheads	2,281	2,597	316	✓	8,905	10,090	1,186	✓	28,031	29,117	1,086	✓
Overheads	9,519	10,872	1,353	✓	37,919	42,885	4,966	✓	117,131	123,980	6,849	✓
Total expenses	41,784	42,891	1,107	✓	162,154	169,306	7,152	✓	503,411	508,096	4,685	✓
Total contribution/(loss)	6,238	2,215	4,024	✓	22,914	5,174	17,740	✓	43,901	29,074	14,826	✓
Gain/loss on disposal of fixed assets and other costs	1,200	205	(995)	✗	2,541	805	(1,736)	✗	6,000	3,000	(3,000)	✗
Gain/loss on revaluation of financial instruments	(1,211)	-	1,211	✓	39,385	-	(39,385)	✗	39,385	-	(39,385)	✗
Non operating (costs)/revenue	(12)	205	217	✓	41,926	805	(41,121)	✗	45,385	3,000	(42,385)	✗
Net surplus/(deficit) before tax	6,250	2,010	4,241	✓	(19,012)	4,369	(23,381)	✗	(1,484)	26,074	(27,558)	✗
Income Tax Expense/(benefit)	-	-	-	-	-	-	-	-	-	-	-	-
Deferred tax	(4,629)	182	4,810	✓	(806)	5,649	6,455	✓	16,944	21,490	(4,546)	✗
Net surplus/(deficit) after tax	10,879	1,828	9,051	✓	(18,206)	(1,280)	(16,926)	✗	(18,428)	4,584	(23,013)	✗

Key: Financial performance result

- ✓ Favourable variance - actual income on or above budget and actual expenditure on or below budget
- ✗ Unfavourable variance - actual income below budget and actual expenditure above budget



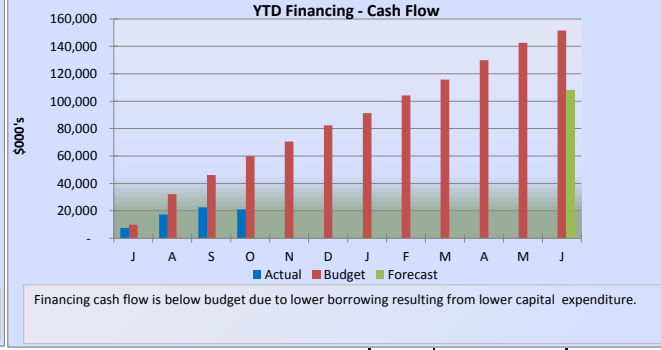
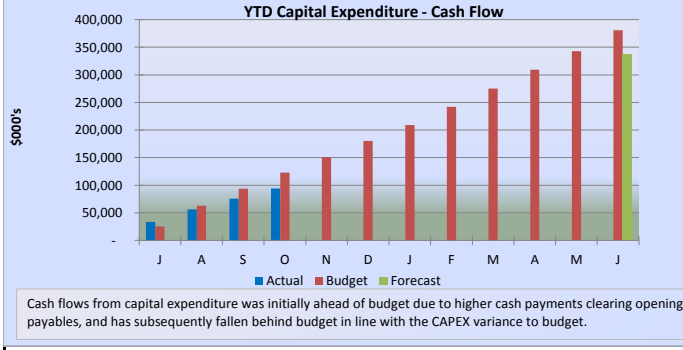
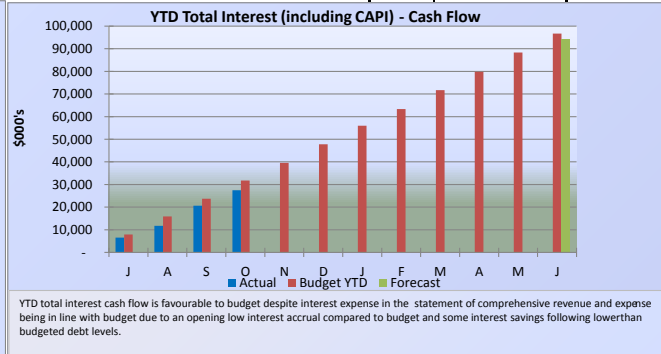
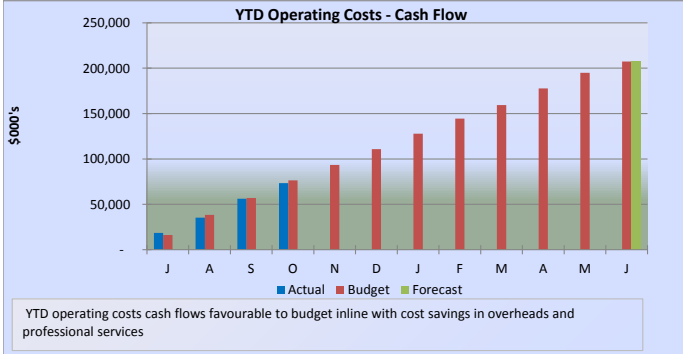
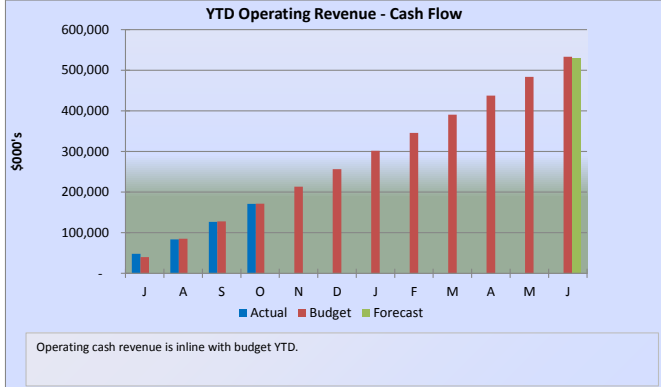
WATERCARE SERVICES LIMITED
STATEMENT OF CASH FLOWS

Oct-15

(\$000's)												
NZ \$000s	Current Month				Year to Date				Full Year			
	Actual	Budget	Variance	Result	Actual	Budget	Variance	Result	Forecast	Budget	Variance	Result
Operating Cash flow:												
Operating Revenue	44,672	43,396	1,276	✓	171,070	171,306	(236)	✗	528,551	533,286	(4,735)	✗
Operating Costs	(17,248)	(19,625)	2,377	✓	(73,307)	(76,479)	3,172	✓	(207,697)	(207,334)	(363)	✗
Interest Paid	(5,676)	(6,704)	1,027	✓	(22,909)	(26,435)	3,526	✓	(76,408)	(78,207)	1,799	✓
OPERATING CASH FLOW	21,748	17,068	4,680	✓	74,854	68,392	6,461	✓	244,446	247,745	(3,298)	✗
Investing Cash flow:												
Capital Expenditure	(18,214)	(29,443)	11,229	✓	(94,092)	(122,922)	28,830	✓	(337,368)	(380,773)	43,405	✓
Capitalised Interest (CAPI)	(1,193)	(1,362)	169	✓	(4,571)	(5,303)	732	✓	(17,768)	(18,501)	732	✓
INVESTING CASH FLOW	(19,407)	(30,805)	11,398	✓	(98,663)	(128,226)	29,563	✓	(355,136)	(399,274)	44,137	✓
Financing Cash flow:												
Short Term Advances/(Repaid)	(1,500)	(1,500)	-	✓	21,500	21,500	-	✓	21,500	21,500	-	✓
Commercial Paper Issued/(Repaid)	13	13	-	✓	236	236	-	✓	236	236	-	✓
Auckland Council Borrowings/(Repaid)	(199)	15,224	(15,423)	✗	(796)	38,098	(38,894)	✓	86,163	129,793	(43,631)	✓
FINANCING CASH FLOW	(1,686)	13,737	(15,423)	✓	20,940	59,834	(38,894)	✓	107,899	151,529	(43,631)	✓
Net Increase (Decrease) in Cash and Cash Equivalents	655	-	655	✓	(2,869)	-	(2,869)	✗	(2,791)	-	(2,792)	✗
Opening Cash Balance/(Overdraft)	(732)	-	(732)	✗	2,792	-	2,792	✓	2,792	-	2,792	✓
Ending Cash Balance/(Overdraft)	(77)	-	(77)	✗	(77)	-	(77)	✗	-	-	-	✓

Key: Financial performance result
 ✓ Favourable variance - actual income above budget or actual expenditure below budget
 ✗ Unfavourable variance - actual income below budget or actual expenditure above budget

Reconciliation Operating Cashflow (\$000's)					
	Current Month		Year to Date		
	Actual	Budget	Actual	Budget	Variance
Net Surplus (Deficit) After Tax	10,879	1,828	(29,085)	(1,280)	(27,805)
Add back non cash items:					
Depreciation and amortisation	18,572	18,222	70,943	72,123	(1,180)
Financial instruments revaluation	(1,211)	-	39,385	-	39,385
Vested assets revenue	(3,925)	(861)	(10,837)	(3,446)	(7,391)
Other non-operating exp/(inc)	1,162	205	2,433	805	1,628
Income Tax Expense/(Benefit)	(4,629)	182	(806)	5,649	(6,455)
Movements in Working Capital	901	(2,507)	2,821	(5,459)	8,279
OPERATING CASH FLOW	21,748	17,068	74,854	68,392	6,461

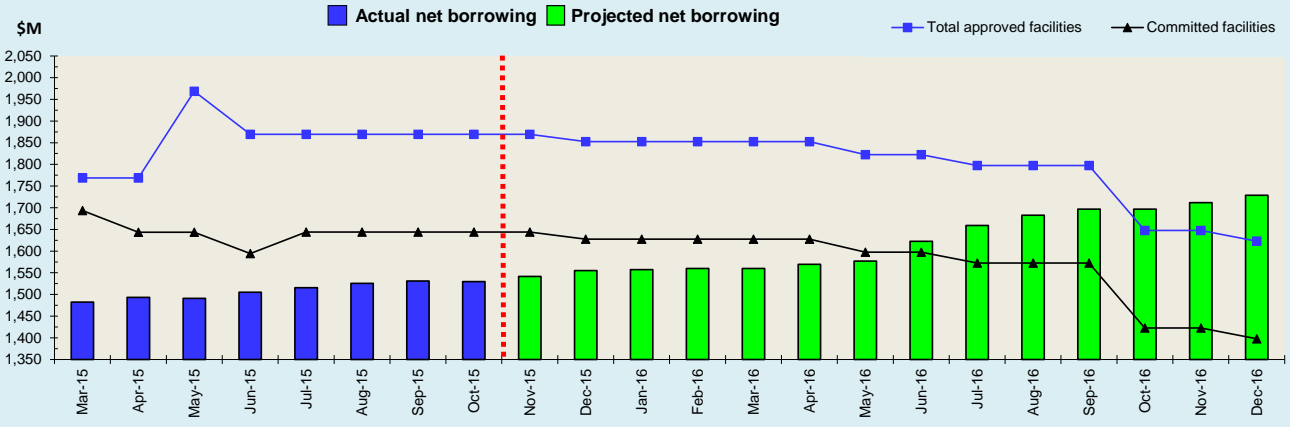


WATERCARE SERVICES LIMITED								Oct-15
STATEMENT OF FINANCIAL POSITION								(\$000's)
June 2015	September		October			June 2016		
Actual	Actual		Actual	Budget	Variance	Forecast	Budget	Variance
		Current assets						
2,792	-	Cash and cash equivalents	-	-	-	-	-	-
47,826	49,241	Trade and other receivables from exchange transactions	45,183	46,369	(1,185)	48,000	51,198	(3,198)
19,524	21,536	Unbilled revenue accrual	24,396	21,040	3,356	19,451	20,044	(593)
3,000	4,238	Prepaid expenses	4,267	2,407	1,860	4,260	2,307	1,953
4,058	4,044	Inventories	4,372	4,539	(167)	4,372	4,539	(167)
2,310	2,278	Derivative financial instruments	3,480	2,526	954	3,480	2,526	954
79,511	81,338	Total current assets	81,698	76,881	4,817	79,563	80,614	(1,051)
		Non-current assets						
8,172,155	8,196,645	Property, plant and equipment	8,226,679	8,261,102	(34,423)	8,468,544	8,607,480	(138,936)
383,539	429,140	Construction/work-in-progress	423,648	435,612	(11,964)	450,140	462,687	(12,547)
(27,673)	(77,523)	Provision for depreciation	(94,387)	(99,830)	5,442	(233,669)	(240,925)	7,256
8,528,021	8,548,262	Total property, plant and equipment	8,555,940	8,596,885	(40,945)	8,685,016	8,829,243	(144,227)
40,184	38,398	Intangible assets	38,941	42,985	(4,045)	36,831	42,838	(6,006)
23,692	23,625	Prepaid expenses	23,589	23,569	20	23,293	23,274	19
3,884	4,001	Inventories	4,195	3,504	691	4,195	3,504	691
9,086	12,196	Derivative financial instruments	10,195	7,794	2,401	10,195	7,794	2,401
8,604,867	8,626,482	Total non-current assets	8,632,860	8,674,739	(41,879)	8,759,530	8,906,653	(147,122)
8,684,378	8,707,820	Total assets	8,714,558	8,751,620	(37,062)	8,839,092	8,987,267	(148,175)
		Current liabilities						
-	732	Bank Overdraft	77	-	77	-	-	-
148,693	148,916	Commercial paper	148,929	148,640	289	148,929	148,640	289
30,264	30,267	Bonds (18/05/16)	30,269	180,263	(149,995)	30,269	30,263	6
-	-	Term loan	150,000	150,000	-	150,000	150,000	-
18,918	43,795	Auckland council loan	43,754	21,144	22,610	43,754	29,328	14,427
197,875	223,710	Total debt current	373,029	500,047	(127,018)	372,952	358,231	14,722
19,407	11,967	Trade and other payables for exchange transactions	13,844	15,746	(1,902)	19,298	25,228	(5,930)
10,380	13,200	Interest accrued	12,780	15,157	(2,377)	10,380	15,216	(4,836)
58,862	46,248	Other accrued expenses	50,716	50,671	45	58,836	50,316	8,520
6,926	6,800	Provision for staff benefits	6,792	4,497	2,295	6,792	4,953	1,839
5,170	5,170	Other provisions	4,170	5,549	(1,379)	3,466	9,149	(5,683)
22,179	26,971	Derivative financial instruments	26,056	19,441	6,615	26,056	19,441	6,615
320,799	334,067	Total current liabilities	487,387	611,108	(123,721)	497,779	482,533	15,247
		Non-current liabilities						
75,000	75,000	Bonds (26/10/18)	75,000	75,000	-	75,000	75,000	-
50,667	50,599	Bonds (26/10/18)	50,579	50,689	(110)	50,579	50,689	(110)
150,000	150,000	Term loan (13/10/16)	-	-	-	-	-	-
-	23,000	Bank revolving credit facility	21,500	21,500	-	21,500	21,500	-
1,043,422	1,017,947	Auckland council loan	1,017,789	930,880	86,909	1,114,588	1,164,392	(49,804)
1,319,089	1,316,546	Total debt non-current	1,164,868	1,078,069	86,799	1,261,667	1,311,581	(49,914)
18,700	17,732	Other accrued expenses	17,673	29,162	(11,489)	17,673	29,684	(12,011)
3,484	3,530	Other Provisions	3,530	3,600	(70)	3,346	-	3,346
1,267	1,284	Provision for staff benefits	1,284	1,543	(259)	1,284	1,751	(466)
135,247	174,129	Derivative financial instruments	173,033	137,203	35,830	173,033	137,203	35,830
1,011,130	1,014,951	Deferred tax liability	1,010,322	1,025,492	(15,170)	1,028,072	1,072,657	(44,585)
2,488,917	2,528,172	Total non-current liabilities	2,370,711	2,275,069	95,642	2,485,075	2,552,875	(67,800)
2,809,715	2,862,239	Total liabilities	2,858,098	2,886,177	(28,079)	2,982,855	3,035,408	(52,553)
		Equity						
260,693	260,693	Issued capital	260,693	260,693	-	260,693	260,693	-
1,812,971	1,812,274	Revaluation reserve	1,812,274	1,812,974	(700)	1,812,274	1,893,526	(81,252)
3,856,351	3,801,699	Retained earnings	3,801,699	3,793,056	8,643	3,801,699	3,793,056	8,643
(55,352)	(29,085)	Current year earnings after tax	(18,206)	(1,280)	(16,926)	(18,428)	4,584	(23,013)
5,874,663	5,845,581	Total equity	5,856,460	5,865,443	(8,983)	5,856,238	5,951,859	(95,622)
8,684,378	8,707,820	Total equity and liabilities	8,714,558	8,751,620	(37,062)	8,839,092	8,987,267	(148,175)

TREASURY RISKS AND INTEREST RATE PERFORMANCE

Oct-15

4



Interest rates

	Actual YTD	Benchmark YTD	Year end forecast
Weighted averages (excl. fees and margins)	4.97%	4.45%	4.92%
Weighted averages (incl. fees and margins)	6.04%	N/A	5.97%

Debt (\$m)

	Actual	Budget	Variance
Short-term borrowings	373.0	350.0	23.0
Long-term borrowings	1,164.9	1,228.1	(63.2)
Total gross debt	1,537.9	1,578.1	(40.2)
Less cash & deposits	-	-	-
Total net borrowing	1,537.9	1,578.1	(40.2)

Committed facilities

- Westpac Term Loan facility \$150 million
- BNZ CP Standby facility \$175 million
- Westpac Revolving Credit facility \$60 million
- Medium term notes \$155 million
- Auckland Council \$1,104 million

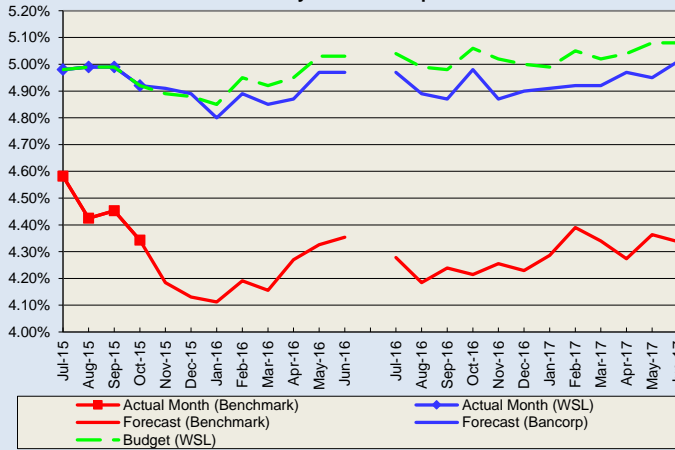
Total committed facilities as at 31 October \$1,644 million

Additional approved facilities

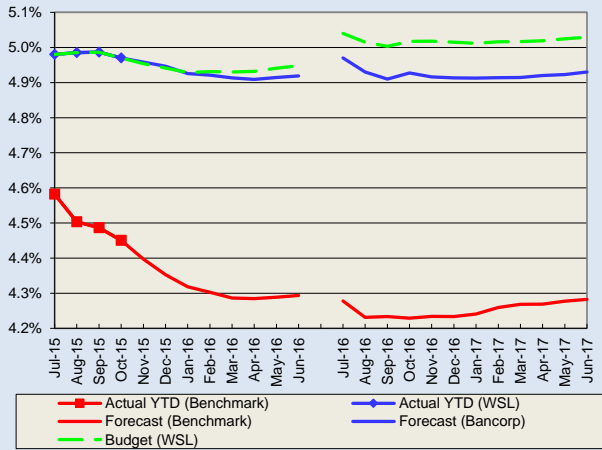
- Approved new funding from Auckland Council \$150 million
- Approved CP issuance, over and above CP Standby facility \$75 million

Total approved facilities as at 31 October \$1,869 million

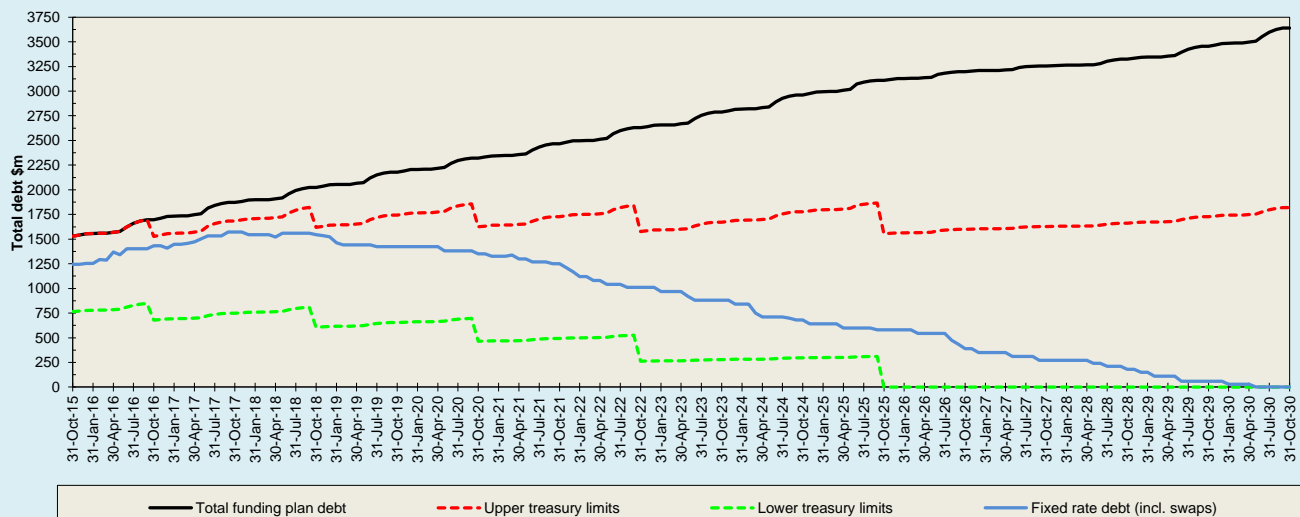
Monthly interest rate performance



Year to date interest rate performance



Forecast total debt profile



COUNTERPARTY EXPOSURES, DEBT CONCENTRATION & COVENANT COMPLIANCE							Oct-15		
Counterparty exposures		S&P credit rating Short / long term	Face value \$000	Credit exposures \$000	Limit \$000	Limit OK / exceeded			
Obligations of registered banks									
ANZ Bank	A1+ / AA-	700,000	3,785	100,000	Limit OK	✓			
Bank of New Zealand	A1+ / AA-	648,772	17,248	100,000	Limit OK	✓			
Commonwealth Bank of Australia	A1+ / AA-	115,000	1,548	100,000	Limit OK	✓			
Kiwibank	A1 / A+	25,000	663	75,000	Limit OK	✓			
Westpac Institutional Bank	A1+ / AA-	565,299	30	100,000	Limit OK	✓			
		2,054,071	23,274						
<i>Note: Credit exposures are the aggregate of direct exposures, 10% of the 'face' value of forward foreign exchange contracts, 15% of the 'face' value of electricity hedging contracts, and the sum of the MTM value of interest rate derivative contracts plus a 3% 'risk' factor (if this produces a positive value).</i>									
Debt concentration \$000									
Committed debt facilities		Maturity	0-12 months	12-24 months	24-36 months	36-48 months	48-60 months	> 60 months	Total
Westpac Term Loan facility	13/10/16	150,000							150,000
BNZ CP Standby facility	1/07/17		175,000						175,000
Westpac Revolving Credit facility	30/11/18					60,000			60,000
Medium-term notes	Various	30,000			125,000				155,000
Auckland Council	Various	41,692	54,668	78,368	82,243	200,000	647,243		1,104,214
Total committed debt facilities			221,692	229,668	203,368	142,243	200,000	647,243	1,644,214
Approved new funding from Auckland Council							150,000		150,000
Approved CP issuance, over and above CP Standby							75,000		75,000
Total committed and approved debt facilities			221,692	229,668	203,368	142,243	200,000	872,243	1,869,214
Treasury policy - total committed debt facilities			<= 500,000	<= 500,000	<= 500,000	<= 500,000	<= 500,000		
Treasury policy compliance			✓	✓	✓	✓	✓		
Drawn bank facilities		Maturity	0-6 months	6-12 months	12-18 months	18-24 months	24-30 months	> 30 months	Total
Westpac Term Loan facility (\$150m)	13/10/16			150,000					150,000
BNZ CP Standby facility (\$175m)	1/07/17								0
Westpac Revolving Credit facility (\$60m)	30/11/18						21,500		21,500
			0	150,000	0	0	0	21,500	171,500
Treasury policy for drawn bank facilities			<= 250,000	<= 250,000	<= 250,000	<= 250,000	<= 250,000	<= 250,000	
Treasury policy compliance			✓	✓	✓	✓	✓	✓	
Other facilities									
BNZ overdraft	On demand	2,000							2,000
			2,000	0	0	0	0	0	2,000
Counterparty exposure in relation to borrowing facilities		Westpac	BNZ	ANZ	CBA	Kiwibank			
Term loan facility		150,000							
Revolving credit facility		60,000							
CP standby facility			175,000						
		210,000	175,000	0	0	0			
Treasury policy			<= 500,000	<= 500,000	<= 500,000	<= 500,000	<= 500,000		
Treasury policy compliance			✓	✓	✓	✓	✓		
Compliance with financial covenants and ratios under the Negative Pledge Deed and Guarantee Facility Deed									
Covenant / ratio		Benchmark/target measure			Outcome		Compliance		
Security interests / total tangible assets - maximum		5%			0.00%		✓		
Total liabilities / total tangible assets - maximum		60%			32.94%		✓		
Total liabilities (including contingent) / total tangible assets - maximum		65%			32.94%		✓		
Shareholders funds - minimum (\$000)		500,000			5,856,459		✓		
EBITDA : funding costs ratio - minimum		1.75			4.27		✓		
Funds from operations : interest cover ratio - minimum		2.00			3.62		✓		
Total tangible assets of borrowing group / total tangible assets - minimum		90%			100.00%		✓		
Loans, guarantees etc to related companies / total tangible assets - maximum		5%			0.00%		✓		
External debt maturing in less than 5 years - minimum		50%			100.00%		✓		
									Page A6

FOREIGN EXCHANGE, COMMERCIAL PAPER & ELECTRICITY HEDGING							Oct-15				
Foreign currency exposures (NZ\$000) including hedging for chemical purchases							USD	EUR	Total		
Total exposure to be hedged							2,326	1,744	4,071		
Foreign exchange hedging							2,326	1,744	4,071		
Percentage cover							100%	100%	100%		
Treasury policy							100%	100%	100%		
Treasury policy compliance							✓	✓	✓		
Hedging for chemical purchases (US\$000)					Mar-16	Sep-16	Mar-17	Sep-17	Total		
Chemicals forward foreign exchange hedging					250				250		
Treasury policy									<= 5,000		
Treasury policy compliance									✓		
Commercial paper maturities											
Issue #	\$000	BKBM	Interest rate	Bid cover (x)	Term (days)	Maturity date	CP maturities				
283	50,000	2.910%	2.981%	2.98	92	25-Nov-15					
284	50,000	2.834%	2.983%	2.16	78	9-Dec-15					
285	50,000	2.960%	3.080%	3.20	91	29-Jan-16					
150,000		3.015%									
<i>Note: BKBM is the banks' mid-rate for bank bills of a similar term on the CP issue date.</i>											
				Nov-15	Dec-15	Jan-16	Feb-16	Mar-16	Apr-16	Beyond Apr-16	Total
Outstanding CP				50,000	50,000	50,000	0	0	0	0	150,000
Uncommitted short-term debt							0	0	0	0	0
				50,000	50,000	50,000	0	0	0	0	150,000
Treasury policy for maximum amount of CP outstanding											
Treasury policy compliance											
<= 250,000											
✓											
Undrawn committed standby facilities											
	1 month	1-2 months	2-3 months	3-4 months	4-5 months	5-6 months	> 6 months				
Undrawn committed standby facility - CP facility											
	175,000	175,000	175,000	175,000	175,000	175,000	175,000	175,000			
50% of CP and other short-term debt repayable within 60 days											
	50,000	50,000	25,000	0	0	0					
Treasury policy: Undrawn standby facilities >= 50% of outstanding CP and other uncommitted short-term debt repayable within 60 days											
Treasury policy compliance											
	✓	✓	✓	✓	✓	✓					
Electricity hedging (NZ\$000)											
	0-6 months	6-12 months	12-18 months	18-24 months	24-30 months	30-36 months	36-42 months	42-48 months			
Contract maturity											
Contract length											
Total value of outstanding contracts											
0											
Treasury policy for maximum value of outstanding contracts											
Treasury policy compliance											
<= 10,000											
✓											
										Page A7	

WATERCARE SERVICES LIMITED
Management Report

Oct-15

4

Table of Contents

	Page
• Monthly Statistics Update	B9

Confidential

Management Report
Monthly Statistics Update

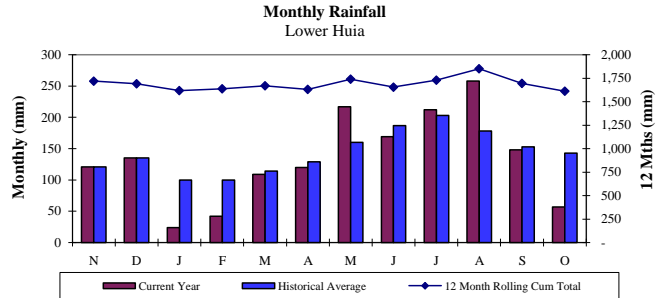
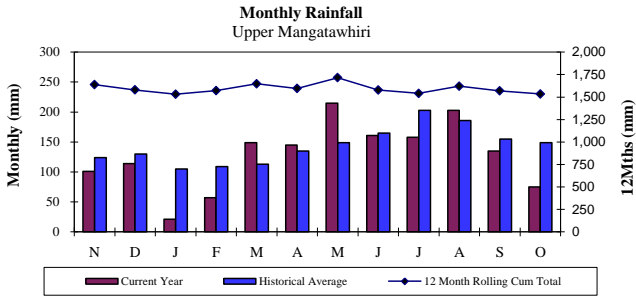
WATERCARE SERVICES LIMITED

Oct-15

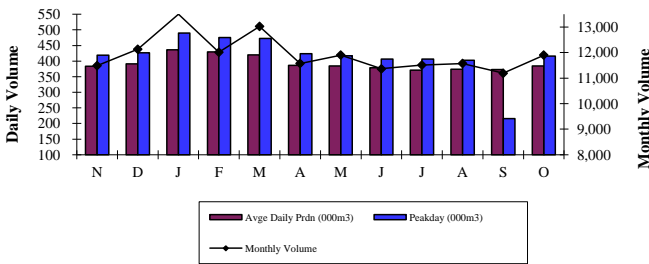
4

Rainfall

Rainfall	Current Month	12 Mth Cumulative Rolling	Rainfall	Current Month	12 Mth Cumulative Rolling
Actual - Upper Mangatawhiri	75 mm	1534 mm	Actual - Lower Huia	57 mm	1612 mm



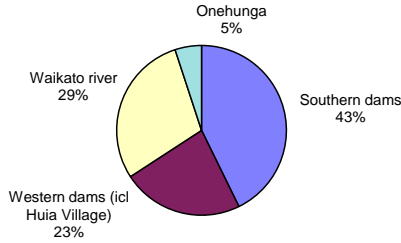
Water Production - Metropolitan Supply



Treated water volumes (000m ³)	Current Month	12 Month Rolling Ave
Monthly Volume	11,902	11,902
Average Daily Production	384	11,931
Peak Day	416	490 ¹

1. Max peak day in past 12 months

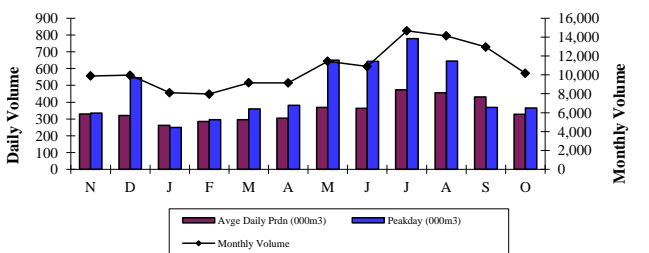
Treated water volumes for the month



Treated water volumes (000m ³)	Current Month		Year to Date		
	Actual	% Budget	Actual	% Budget	Budget
Southern dams	5,086	43%	21,453	46%	31,595
Western dams	2,747	23%	10,489	23%	9,402
Waikato river	3,468	29%	11,891	26%	3,873
Onehunga aquifer	600	5%	2,345	5%	1,071
Total	11,902	100%	46,177	100%	45,941

By utilising the Waikato river and Onehunga above budget, total dam storage level achieved at 83%

Wastewater Treatment - Metropolitan Treatment



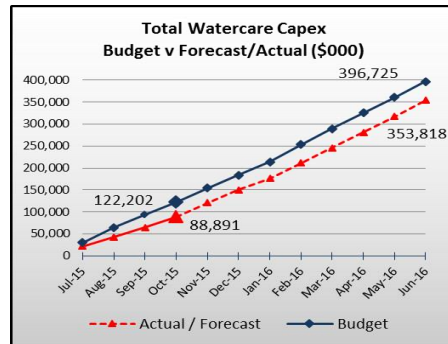
	Current Month	12 Month Rolling Ave
Monthly Volume (000m ³)	10,163	10,707
Average Daily Production	328	352
Peak Day	366	779 ²

2. Max peak day in past 12 months

WATERCARE PUBLIC REPORT CAPITAL EXPENDITURE



TOTAL WATERCARE EXPENDITURE	Year to Date		Annual Performance	
	Actual	Budget	Actual + Forecast	Budget
Strategy & Planning	1,186	5,064	27,176	41,999
Infrastructure Delivery	71,948	88,424	249,548	267,118
Service Delivery	5,758	14,420	40,521	47,382
Retail	2,037	3,227	7,033	8,150
Information Services	2,618	3,443	6,745	7,380
Other	771	2,322	5,027	6,195
Capitalised Interest	4,571	5,303	17,769	18,501
Watercare Total	88,891	122,202	353,818	396,725



Project / Programme Infrastructure Related Projects (Phase: Design / Execution)	Project Performance		Annual Performance		Status	
	Capex Outturn Estimate	Current Forecast	Forecast	Budget	Time	Cost

Water Projects >\$15 Million

Hunua No 4 Programme	385,372	385,361	50,070	50,514		
North Harbour Watermain Duplication	240,000	239,993	7,256	7,265		
Waikato 175MLD Expansion Stage Ultimate	48,880	48,837	11,999	12,000		
Huia No 1 Watermain Replacement	42,103	42,073	4,062	4,423		
Ardmore WTP Treated Water Resilience	32,120	32,119	707	1,503		

Wastewater Projects >\$15 Million

Central Interceptor Feasibility Design	960,470	960,470	13,451	14,471		
Northern Interceptor - Stage 1	148,200	147,825	3,400	4,414		
Mangere WWTP BNR Capacity	141,040	141,040	51,491	51,500		
Mangere WWTP Solids Stream Upgrade	74,800	74,800	11,515	11,960		
Rosedale WWTP Expansion Project	63,954	63,954	2,611	2,985		
Pukekohe WWTP Upgrade	59,000	57,063	4,772	5,422		
Pukekohe Trunk Sewer Upgrade	37,000	37,000	7,359	4,755		
Puketutu Island Rehabilitation	29,385	29,385	8,470	10,000		
Pond 2 Landfill Development	29,234	27,414	(166)	0		
Army Bay WWTP Outfall Upgrade	27,500	27,521	878	758		
Glendowie Branch Sewer Upgrade	17,845	17,912	950	880		

Shared Services >\$15 Million

Networks Controls Upgrade	19,944	19,888	2,771	3,500		
---------------------------	--------	--------	-------	-------	--	--

Capex Programme (Design / Execution)

>\$15 Million	2,356,847	2,352,654	181,598	186,349
>\$2 Million <\$15 Million	207,829	215,900	50,078	57,527
<\$2 Million	74,530	88,757	37,095	36,167
TOTAL	2,639,205	2,657,311	268,771	280,043

Watercare Services Ltd
Financial Summary 2015-16
Report Period October 2015
Infrastructure Related Projects: Strategy & Planning / Infrastructure Delivery / Service Delivery

Traffic light Key:
On target / No adverse Service Delivery impact
Short to medium term issues that may impact on outcomes or targets / Minor Service Delivery Impacts
Medium to long term issues that are impacting on outcomes or targets / Risk of significant Service Delivery Impact
Underspend on the capex variance (-10%)
No approved capex or the project is "in-service" indicating the issue is not critical

Local Board Interaction

Local Board	Chair	Deputy Chair	August-15	September-15	October-15
Albert - Eden	Peter Haynes	Glenda Fryer	Information flyer on the Huia No. 1 Watermain (21 August). Invitation to view Central Interceptor drop shaft testing at Auckland University (27 August).	Site visit to Auckland University Engineering school to observe model of the drop-shaft tunnel (8 Sept).	Update on Hunua 4 watermain project (also sent to Ward Councillors) (29 Oct). Photos of work at Mt Albert Reservoir (29 Oct).
Devonport - Takapuna	Joseph Bergen Watercare Rep (5 May 2015 to end of the 2013-2016 term)	Grant Gillion (5 May 2015 to end of the 2013-2016 term)	Meeting regarding Special Housing Areas (25 August). Escalation regarding private property water leak (31 August)	Information on fats, oils and grease disposal (2 Sept).	Notification of works in Domain Road Devonport (12 Oct).
Franklin	Andy Baker	Jill Naysmith	Notification of herbicide detection in Cosseys Reservoir (3 August). Information to Jill Naysmith on the SHA servicing at Glenbrook Beach (20 August)	Information on fats, oils and grease disposal (2 Sept). Information regarding landowner approval for installation of bulk water meter at Hill Road Reserve (8 Sept). Runciman Reservoirs open evening (24 Sept). Information on developer query sent to Local Board Chair (28 Sept)	Information on wastewater servicing and Whitford landfill leachate (5 Oct). Information on South western wastewater servicing to Alan Cole (8 Oct). Escalated issue regarding water leak in Waiuku (22 Oct). Flyer on South Western Wastewater Servicing Strategy (22 Oct). Notification of public plant tours (23 Oct). Escalation from the Chair regarding a Campervan Dump Station application (29 Oct).
Great Barrier	Izzy Fordham	Susan Daly			
Henderson - Massey	Vanessa Neeson	Shane Henderson	Public meeting regarding wastewater overflows at Taipari Strand near Roy Ranby Boardwalk (19 August). Local Board briefing on growth related issues (25 August). Information on Taipari Strand Overflows (27 August)	Local Board visit to Watercare to hear more about inflow and infiltration programmes and to see the Control Room (30 Sept).	Notice of Northern Interceptor Stage 3 discussions with parks (16 Oct).
Hibiscus and Bays	Julia Parfitt	Greg Sayers			Local Board Briefing (14 Oct). Army Bay wastewater outfall replacement flyer (29 Oct).
Howick	David Collings	Adele White		Flyer on wastewater works in Studfall Street and Hope Farm Avenue (10 Sept). Tamaki Estuary Environment Forum (16 Sept).	
Kaipatiki	Kay McIntyre	Ann Hartley		Presentation to infrastructure committee on Wairau Road project (16 Sept). Information on Trunk Sewer 8 Project (17 Sept). Update on Maunganui Storage Tank works (18 Sept).	
Mangere - Otahuhu	Lydia Sosene	Carrol Elliott	Central Interceptor drop shaft testing at Auckland University (27 August).	Site visit to Auckland University Engineering school to observe model of the drop-shaft tunnel (10 Sept). Flyer on works at Ascot and Montgomerie Roads	Local Board Briefing (14 Oct).

Board - Public Session - Chief Executive's Report and Scorecard

Local Board	Chair	Deputy Chair	August-15	September-15	October-15
				(10 Sept).	
Manurewa	Angela Dalton	Simeon Brown		Escalated complaint response regarding completion of works in Wattle Farm Road (7 Sept).	
Maungakiekie - Tamaki	Simon Randall	Chris Makoare	Site meeting regarding Van Dammes Lagoon opening (1 September)	Site visit regarding Van Dammes Lagoon work sign off (1 Sept). Notice of works in Queens Road Panmure (14 Sept). Tamaki Estuary Environment Forum (16 Sept).	Letter to the chairman regarding works at Van Dammes Lagoon (5 Oct). Information on the Glen Innes wastewater project and effect on the Adult Literary Centre Lease (7 Oct). Information on Fluoridation and the Onehunga water supply (15 Oct). Letter seeking approval to move structures at Van Dammes lagoon (22 Oct). Update on Hunua 4 watermain project (also sent to Ward Councillors) (29 Oct).
Orakei	Desley Simpson	Kit Parkinson, Colin Davis (Watercare Rep)	Site meeting in St Heliers to discuss future wastewater planning (14 August). Liaison with Kit Parkinson regarding Madills wastewater project and transition of construction site to stormwater (24 August). Escalation regarding property LIM and wastewater separation (31 August).	Update to Local Board on St Heliers Bay Wastewater Project deferral (1 Sept). St Heliers Residents and Ratepayers and Orakei Local Board presentation (8 Sept). Response to query about water leaks in Paritai Drive (14 Sept). Tamaki Estuary Environment Forum (16 Sept).	
Otara - Papatoetoe	Fa'anānā Efeso (Efeso) Collins	Ross Robertson	Placemaking Otara Waterways & Lake Project Steering group with Stephen Grey (13 August).	Otara Waterways and Lakes Steering Group Presentation (16 Sept).	
Papakura	Bill McEntee	Michael Turner			
Puketapapa	Julie Fairey	Harry Doig	Information flyer on the Huia No. 1 Watermain (21 August). Central Interceptor drop shaft testing at Auckland University (27 August).	Notification of local pipeline renewal works in Hillsborough (3 Sept). Site visit to Auckland University Engineering school to observe model of the drop-shaft tunnel (8 Sept). Information on local watermain upgrade in Herd Road sent to Harry Doig (18 Sept).	
Rodney	Brenda Steele	Stephen Garner	Steven Garner assisted Watercare with public Unitary Plan designation discussions (11 August). Escalated complaint regarding fixed wastewater charging (27 August). Update regarding watermain upgrades in Muriwai (28 August).		Local Board Briefing (19 Oct). Update on works at Huapai (28 Oct).
Upper Harbour	Lisa Whyte (5 May 2015 to end of the 2013-2016 term)	Brian Neeson (5 May 2015 to end of the 2013-2016 term)			Local Board Briefing (6 Oct). Greenhithe Residents and Ratepayers meeting re Northern Interceptor project (6 Oct). Update on proposed works in Centorian

Board - Public Session - Chief Executive's Report and Scorecard

Local Board	Chair	Deputy Chair	August-15	September-15	October-15
					Reserve (20 Oct).
Waiheke	Paul Walden	Shirin Brown			
Waitakere Ranges	Sandra Coney	Denise Yates	Information flyer on the Huia No. 1 Watermain (21 August)		Local Board Briefing (15 Oct)
Waitemata	Shale Chambers	Pippa Coom	Central Interceptor drop shaft testing at Auckland University (27 August).	Information on fats, oils and grease disposal (2 Sept). Notice of works in Ardmore Road Ponsonby (28 Sept). Workshop for landowner approval of pipe works in Victoria Park (29 Sept).	
Whau	Catherine Farmer	Susan Zhu	Information flyer on the Huia No. 1 Watermain (21 August)		Information on investigation works at Browns Bay roundabout for the Huia No. 1 watermain project (6 Oct).
Manukau Harbour Forum	Jill Naysmith			Information on fats, oils and grease disposal (2 Sept).	Proposal for presentation on South Western Wastewater Servicing (15 Oct).